

25	2	Upplag		TBD
24	1	Stolpar	VKR	PF-126-134
23	1	ID 23	UPE 140	PF-126-133
22	1	ID 22	UPE 140	PF-126-132
21	1	ID 21	UPE 140	PF-126-131
20	1	ID 20	UPE 140	PF-126-130
19	1	ID 19	UPE 140	PF-126-129
18	1	ID 18	UPE 140	PF-126-128
17	1	ID 17	UPE 140	PF-126-127
16	2	ID 16	HEA 120	PF-126-126
15	2	ID 15	HEA 120	PF-126-125
14	4	ID 14	UPE 100	PF-126-124
13	4	ID 13	UPE 100	PF-126-123
12	4	ID 12	UPE 140	PF-126-122
11	4	ID 11	UPE 140	PF-126-121
10	4	ID 10	UPE 140	PF-126-120
9	4	ID 9	UPE 140	PF-126-119
8	4	ID 8	UPE 140	PF-126-118
7	4	ID 7	UPE 140	PF-126-117
6	4	ID 6	UPE 140	PF-126-116
5	4	ID 5	UPE 140	PF-126-115
4	3	ID 4	UPE 140	PF-126-114
3	3	ID 3	UPE 140	PF-126-113
2	3	ID 2	UPE 140	PF-126-112
1	3	ID 1	UPE 140	PF-126-111
Pos	Qty	Item	Material	Reference

EAST SIDE TECHNOLOGY

mail@eastsideotechnology.com

Project: DANSENS HUS - STUDIOSCENEN

Element: BÄRVERK STÅL Description: ÖVERSIKT-PPLAN

General notes: Number of units needed

General Tolerances: Welded constructions (+1/-1) General Surface Finish: Ra = 10

Surface Treatment: Method: Colour:

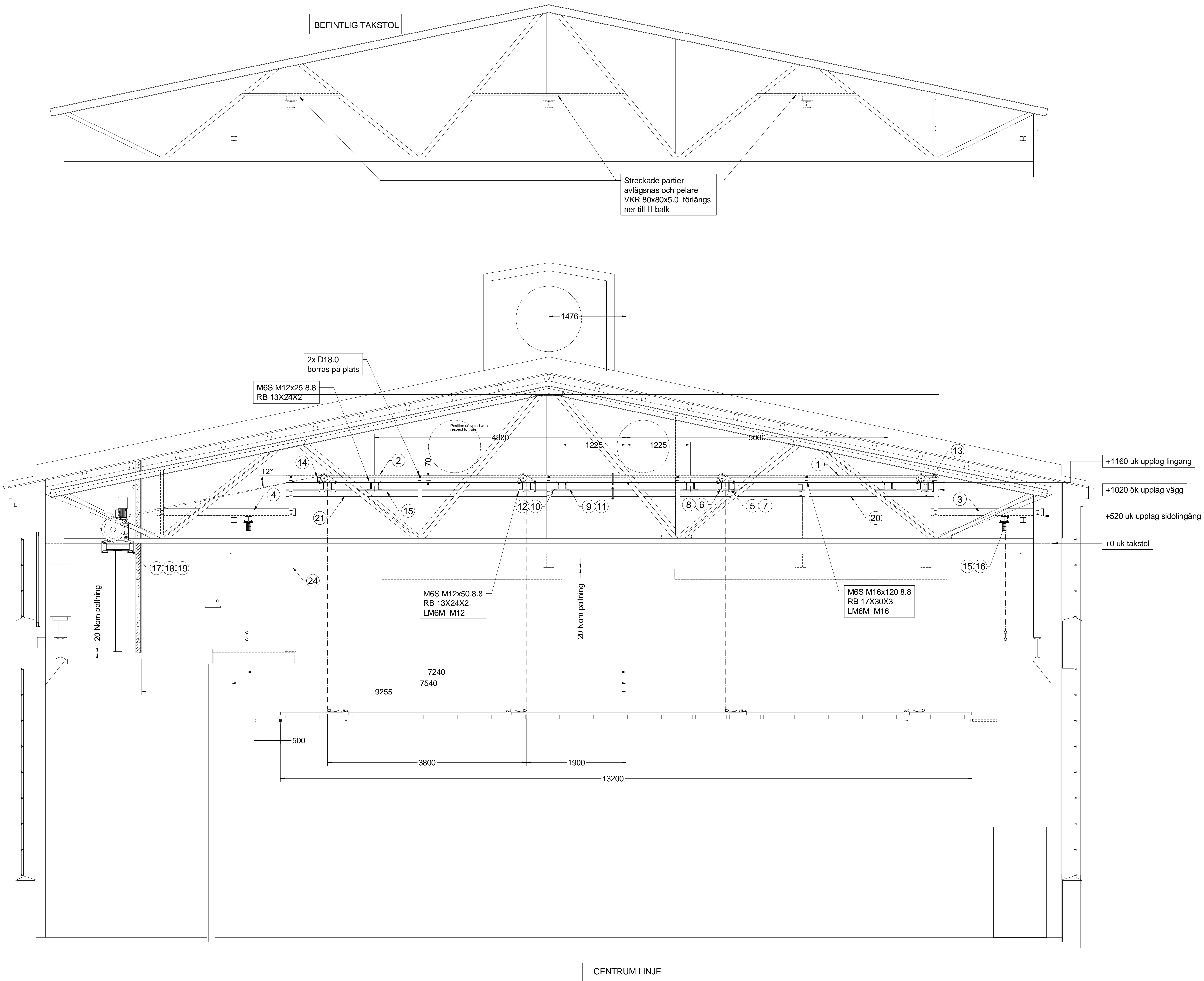
Material:

Design by: N. Philipson Date: 2026-03-25

Drawn by: N. Philipson Number: PF-126-101 Weight: xx kg

Approved by: Format: A1 Sheet: 1 Scale: 1 : 35 Rev.: A

C			
B			
A	NP	Release	2026-03-25
Rev	By	Comment	Date
Revisions			



25	2	Upplag		TBD
24	1	Stolpar	VKR	PF-126-134
23	1	ID 23	UPE 140	PF-126-133
22	1	ID 22	UPE 140	PF-126-132
21	1	ID 21	UPE 140	PF-126-131
20	1	ID 20	UPE 140	PF-126-130
19	1	ID 19	UPE 140	PF-126-129
18	1	ID 18	UPE 140	PF-126-128
17	1	ID 17	UPE 140	PF-126-127
16	2	ID 16	HEA 120	PF-126-126
15	2	ID 15	HEA 120	PF-126-125
14	4	ID 14	UPE 100	PF-126-124
13	4	ID 13	UPE 100	PF-126-123
12	4	ID 12	UPE 140	PF-126-122
11	4	ID 11	UPE 140	PF-126-121
10	4	ID 10	UPE 140	PF-126-120
9	4	ID 9	UPE 140	PF-126-119
8	4	ID 8	UPE 140	PF-126-118
7	4	ID 7	UPE 140	PF-126-117
6	4	ID 6	UPE 140	PF-126-116
5	4	ID 5	UPE 140	PF-126-115
4	3	ID 4	UPE 140	PF-126-114
3	3	ID 3	UPE 140	PF-126-113
2	3	ID 2	UPE 140	PF-126-112
1	3	ID 1	UPE 140	PF-126-111
Pos	Qty	Item	Material	Reference

EAST SIDE TECHNOLOGY
mail@eastsideotechnology.com

Project:
DANSENS HUS - STUDIOSCENEN

Element:Description
BÄRVERK STÅLÖVERSIKT-TVÄRSNITT

General notes

Number of units needed

General TolerancesGeneral Surface Finish
Welded constructions (+1/-1)
Machined constructions (+0.25/-0.25)Ra = 10

Surface TreatmentMethodColour

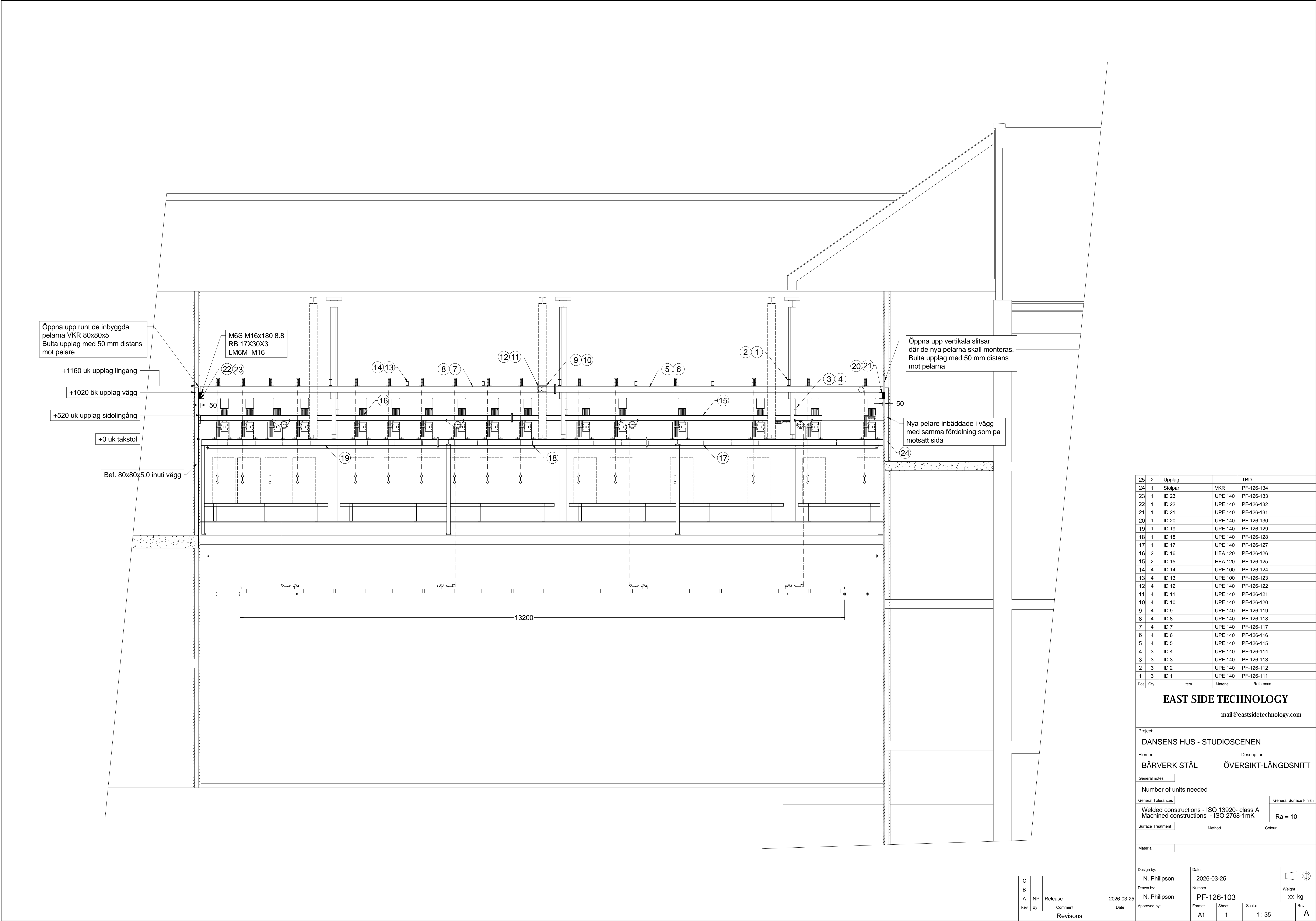
Material

Design by:Date:
N. Philipson2026-03-25

Drawn by:NumberWeight
N. PhilipsonPF-126-102xx kg

Approved by:FormatSheetScale:Rev.
A111 : 35A

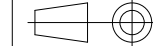
Revisions

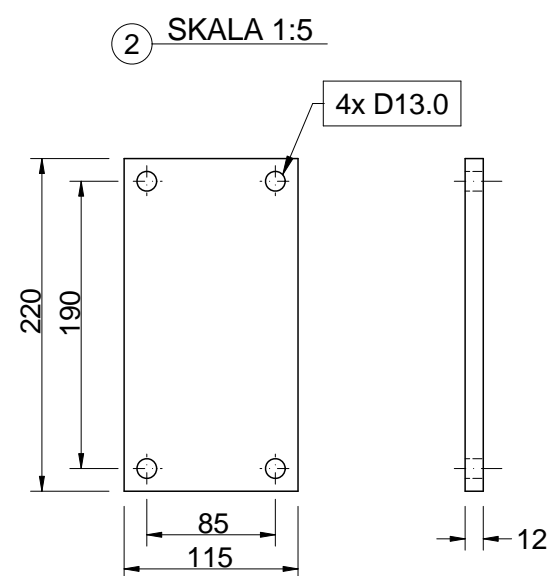
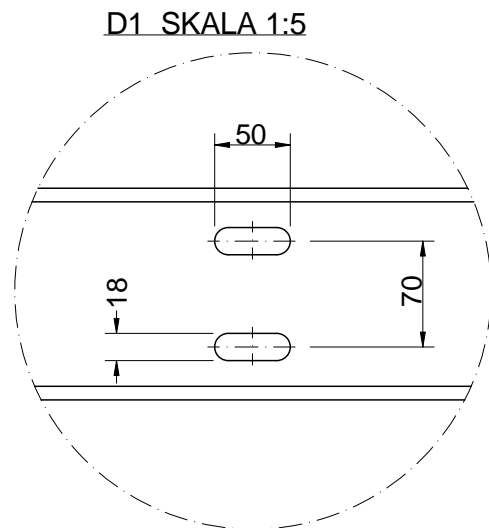


25	2	Upplag		TBD
24	1	Stolpar	VKR	PF-126-134
23	1	ID 23	UPE 140	PF-126-133
22	1	ID 22	UPE 140	PF-126-132
21	1	ID 21	UPE 140	PF-126-131
20	1	ID 20	UPE 140	PF-126-130
19	1	ID 19	UPE 140	PF-126-129
18	1	ID 18	UPE 140	PF-126-128
17	1	ID 17	UPE 140	PF-126-127
16	2	ID 16	HEA 120	PF-126-126
15	2	ID 15	HEA 120	PF-126-125
14	4	ID 14	UPE 100	PF-126-124
13	4	ID 13	UPE 100	PF-126-123
12	4	ID 12	UPE 140	PF-126-122
11	4	ID 11	UPE 140	PF-126-121
10	4	ID 10	UPE 140	PF-126-120
9	4	ID 9	UPE 140	PF-126-119
8	4	ID 8	UPE 140	PF-126-118
7	4	ID 7	UPE 140	PF-126-117
6	4	ID 6	UPE 140	PF-126-116
5	4	ID 5	UPE 140	PF-126-115
4	3	ID 4	UPE 140	PF-126-114
3	3	ID 3	UPE 140	PF-126-113
2	3	ID 2	UPE 140	PF-126-112
1	3	ID 1	UPE 140	PF-126-111
Pos	Qty	Item	Material	Reference

EAST SIDE TECHNOLOGY

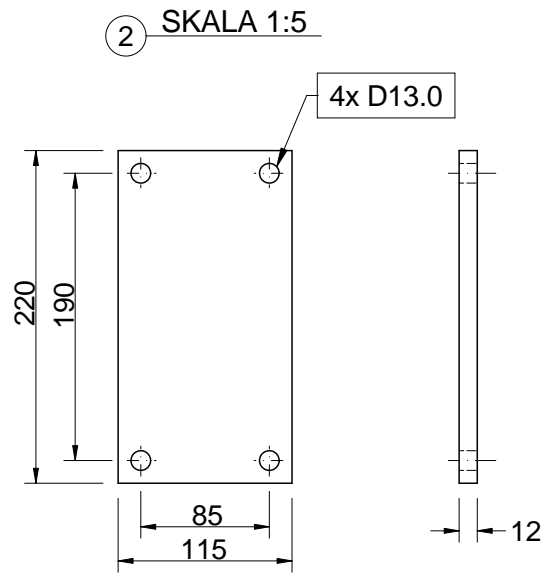
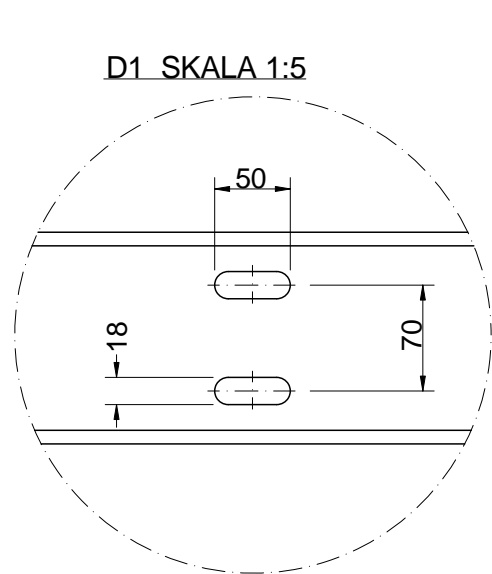
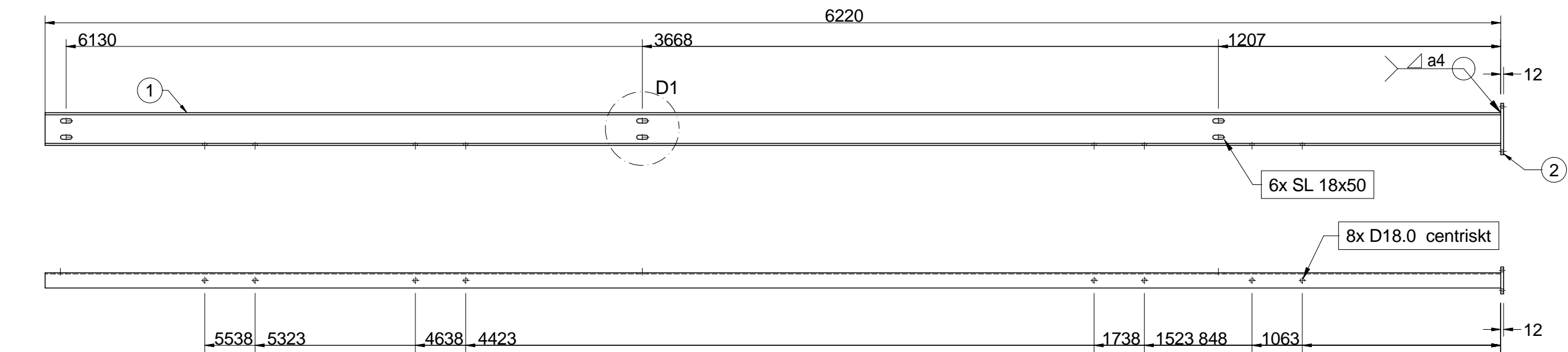
mail@eastsidetechnology.com

Project:		DANSENS HUS - STUDIOSCENEN	
Element:		Description	
BÄRVERK STÅL		ÖVERSIKT-LÅNGDSNITT	
General notes			
Number of units needed			
General Tolerances		General Surface Finish	
Welded constructions - ISO 13920- class A		Ra = 10	
Machined constructions - ISO 2768-1mK			
Surface Treatment		Method	Colour
Material			
Design by:		Date:	
N. Philipson		2026-03-25	
Drawn by:		Number	Weight
N. Philipson		PF-126-103	xx kg
Approved by:		Format	Scale:
		A1	1 : 35
		Sheet	Rev.
		1	A



<div>EAST SIDE TECHNOLOGY</div> <div>mail@eastsidetechnology.com</div>			
Project: <div>DANSENS HUS - STUDIOSCENEN</div>			
Element: <div>BÄRVERK</div>		Description <div>ID 1</div>	
General notes			
Number of units needed		3	
Toleranser om ej annat anges			
		Welded constructions - ISO 13920- class A Machined constructions - ISO 2768-1mK	
Ytfinhet Ra om ej annat anges			
		Ra = 10	
Ytbehandling	Method	Colour	Glans
BLACK RAL9005			
Material			
S 355			
Additional information <div>Skarpa kanter brytes</div>			Weight <div>93 kg</div>

B				Design by:	Date:	Scale:		
A	NP	Release	2026-04-06	N. Philipson	2026-04-06	1:20		
Rev	By	Comment	Date	Drawn by:	Format	Sheet	Nr.	Rev.
Revisions				N. Philipson	A3	1	PF-126-111	A



3					
2	1	Plåt	S355J2	PL 220x115 t=12.0	
1	1	Balk	S355 N	UPE 140 L=6220	
Det nr	Qty/Unit	Item	Supplier/Materiel	Reference	Rev

EAST SIDE TECHNOLOGY

mail@eastside technology.com

Project:
DANSENS HUS - STUDIO SCENEN

Element: BÄRVERK
Description: ID 2

General notes

Number of units needed 3

Toleranser om ej annat anges

Welded constructions - ISO 13920- class A
Machined constructions - ISO 2768-1mK

Ytfinhet Ra om ej annat anges

Ra = 10

Ytbehandling

Method Colour Glans

BLACK RAL9005

Material

S 355

Additional information

Skarpa kanter brytes

Weight

93 kg

Design by:

N. Philipson

Date:

2026-04-06

Scale:

1:20

Drawn by:

N. Philipson

Format

A3

Sheet

1

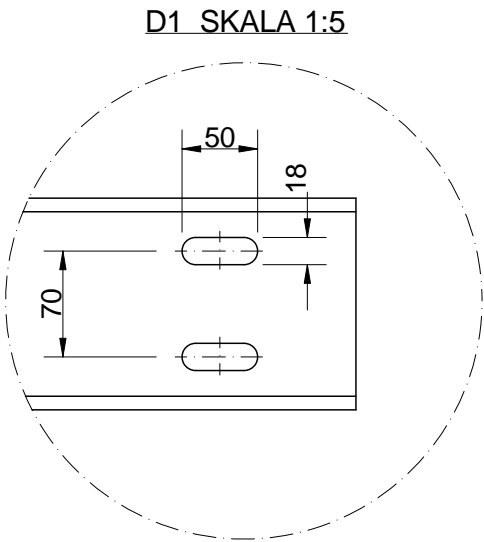
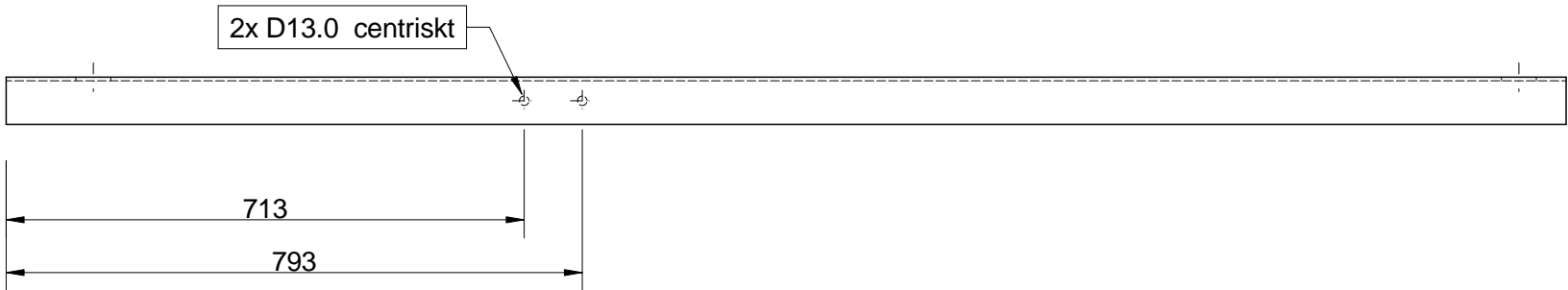
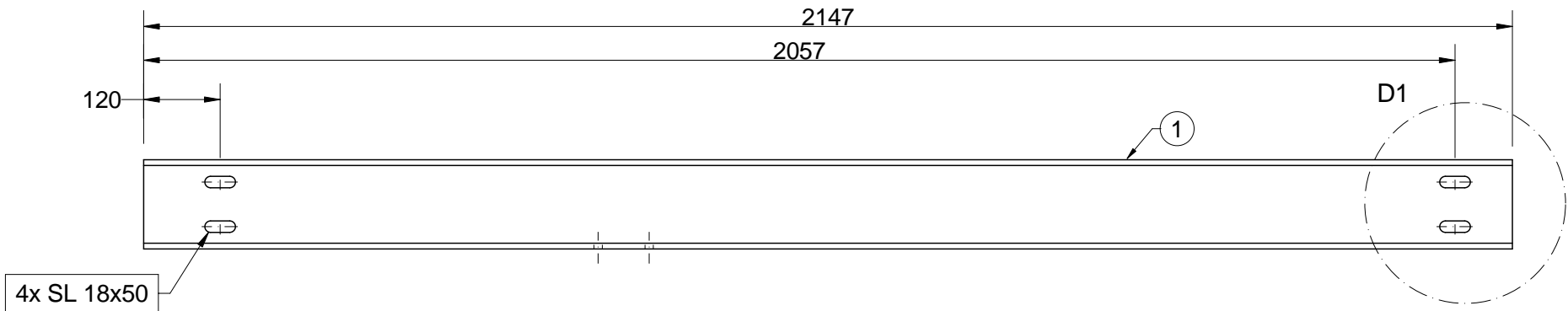
Nr.

PF-126-112

Rev.

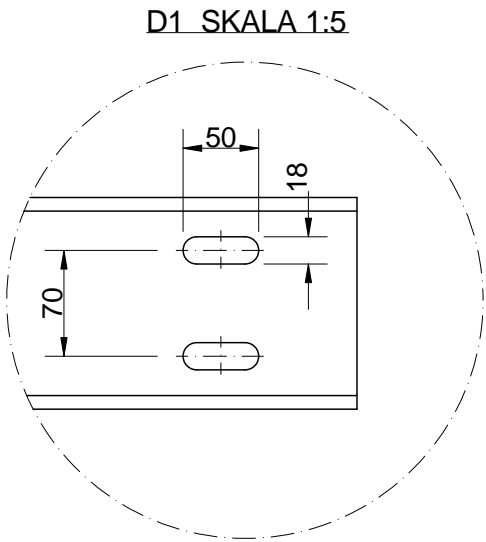
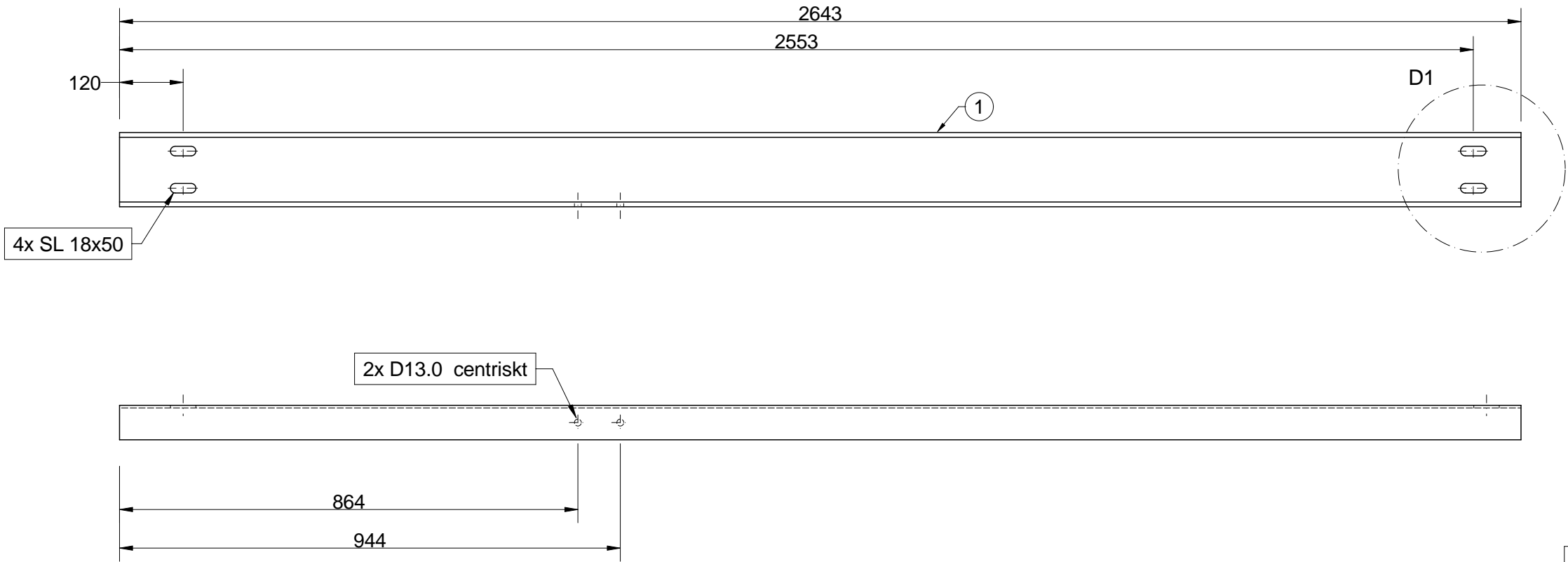
A

B			
A	NP	Release	2026-04-06
Rev	By	Comment	Date
Revisions			



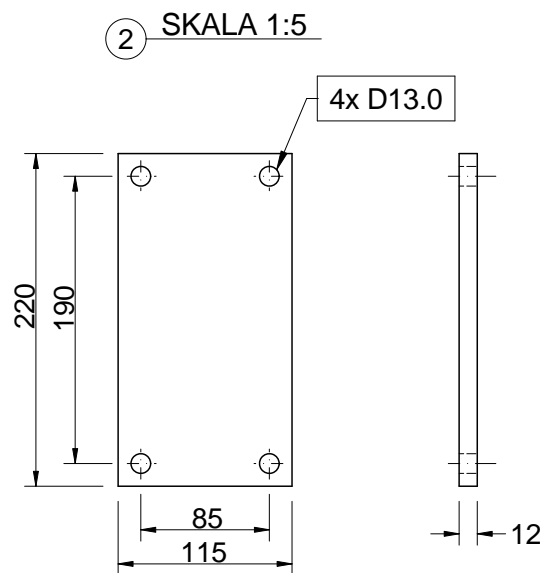
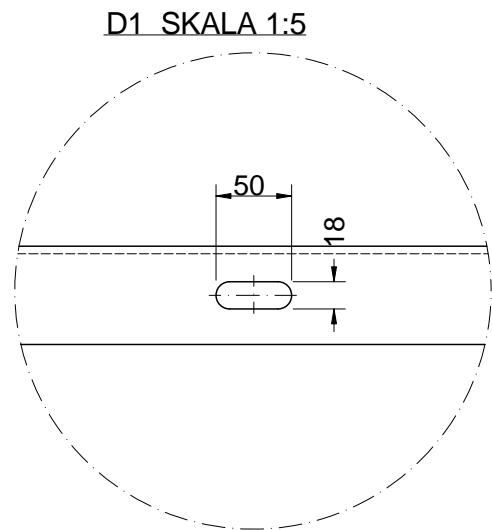
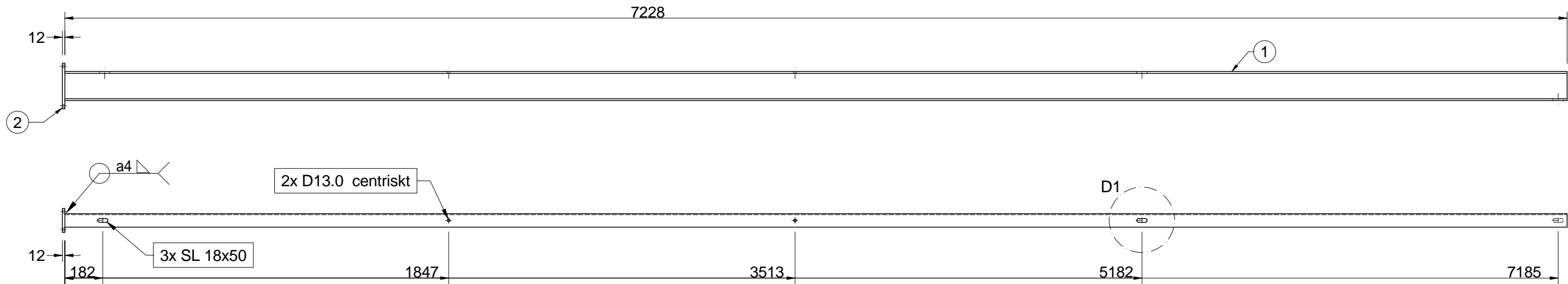
3						
2						
1	1	Balk	S355 N	UPE 140 L=2147		
Det nr	Qty/Unit	Item	Supplier/Materiel	Reference	Rev	
EAST SIDE TECHNOLOGY						
mail@eastsidetechnology.com						
Project:						
DANSENS HUS - STUDIOSCENEN						
Element:			Description			
BÄRVERK			ID 3			
General notes		3				
Number of units needed						
Toleranser om ej annat anges						
Welded constructions - ISO 13920- class A Machined constructions - ISO 2768-1mK						
Ytfinhet Ra om ej annat anges						
Ra = 10						
Ytbehandling						
Method		Colour		Glans		
BLACK RAL9005						
Material		S 355				
Additional information				Weight		
Skarpa kanter brytes				32 kg		
Design by:			Date:		Scale:	
N. Philipson			2026-04-06		1:10	
Drawn by:			Format	Sheet	Nr.	Rev.
N. Philipson			A3	1	PF-126-113	A

B			
A	NP	Release	2026-04-06
Rev	By	Comment	Date
Revisions			



3						
2						
1	1	Balk	S355 N	UPE 140 L=2643		
Det nr	Qty/Unit	Item	Supplier/Materiel	Reference	Rev	
EAST SIDE TECHNOLOGY						
mail@eastsidetechnology.com						
Project:						
DANSENS HUS - STUDIOSCENEN						
Element:			Description			
BÄRVERK			ID 4			
General notes		3				
Number of units needed						
Toleranser om ej annat anges						
Welded constructions - ISO 13920- class A Machined constructions - ISO 2768-1mK						
Ytfinhet Ra om ej annat anges						
Ra = 10						
Ytbehandling						
Method		Colour		Glans		
BLACK RAL9005						
Material		S 355				
Additional information				Weight		
Skarpa kanter brytes				39 kg		
Design by:			Date:		Scale:	
N. Philipson			2026-04-06		1:10	
Drawn by:			Format	Sheet	Nr.	Rev.
N. Philipson			A3	1	PF-126-114	A

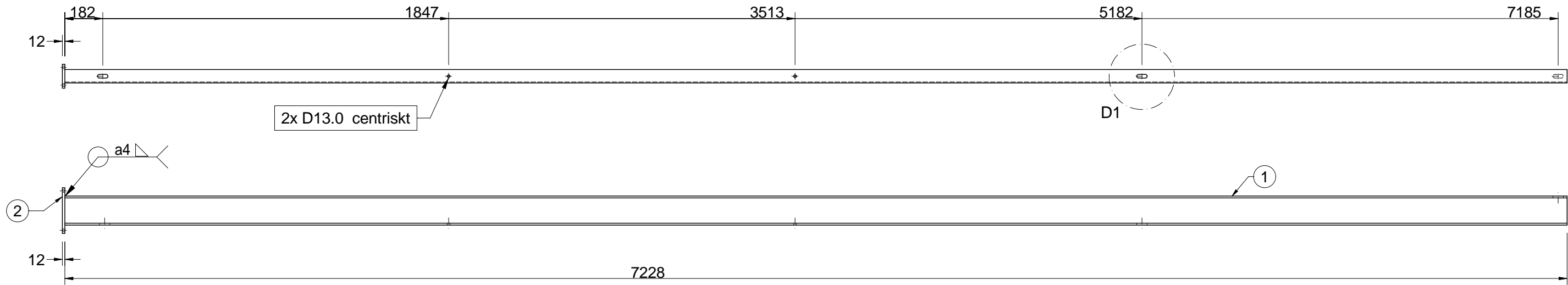
B			
A	NP	Release	2026-04-06
Rev	By	Comment	Date
Revisions			



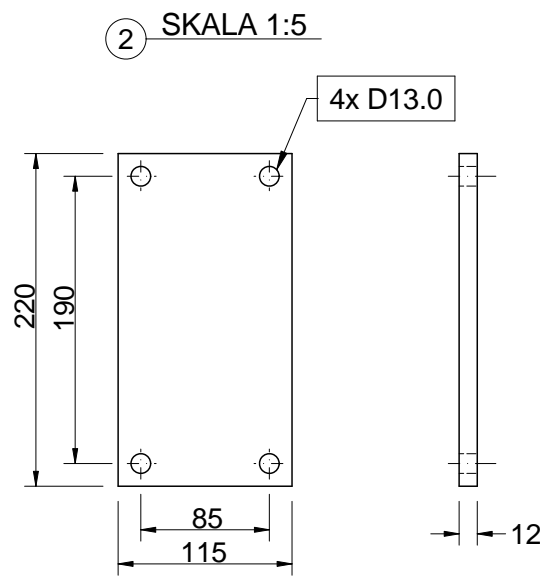
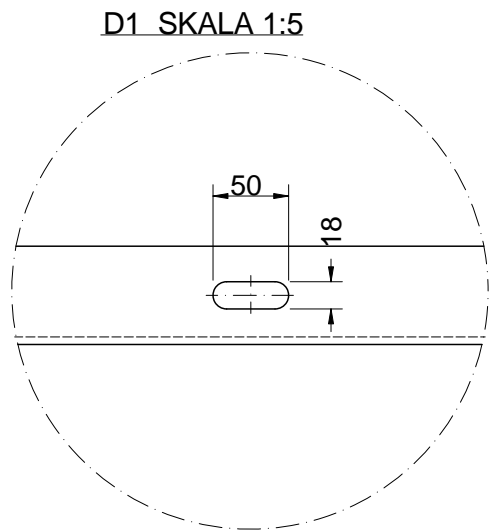
SPEGELVÄND TILL ID6

3					
2	1	Plåt	S355J2	PL 220x115 t=12.0	
1	1	Balk	S355 N	UPE 140 L=7228	
Det nr	Qty/Unit	Item	Supplier/Materiel	Reference	Rev
<div>EAST SIDE TECHNOLOGY</div> <div>mail@eastsidetechnology.com</div>					
Project: DANSENS HUS - STUDIOSCENEN					
Element: BÄRVERK			Description ID 5		
General notes			4		
Number of units needed					
Toleranser om ej annat anges					
Welded constructions - ISO 13920- class A Machined constructions - ISO 2768-1mK					
Ytfinhet Ra om ej annat anges					
Ra = 10					
Ytbehandling		Method	Colour	Glans	
BLACK RAL9005					
Material					
S 355					
Additional information Skarpa kanter brytes				Weight 109 kg	
Design by: N. Philipson			Date: 2026-04-06		Scale: 1:20
Drawn by: N. Philipson			Format A3	Sheet 1	Nr. PF-126-115
					Rev. A

B			
A	NP	Release	2026-04-06
Rev	By	Comment	Date
Revisions			



SPEGELVÄND TILL ID5



3					
2	1	Plåt	S355J2	PL 220x115 t=12.0	
1	1	Balk	S355 N	UPE 140 L=7228	
Det nr	Qty/Unit	Item	Supplier/Materiel	Reference	Rev

EAST SIDE TECHNOLOGY

mail@eastsidetechnology.com

Project:
DANSENS HUS - STUDIOSCENEN

Element: BÄRVERK
Description: ID 6

General notes

Number of units needed

4

Toleranser om ej annat anges

Welded constructions - ISO 13920- class A
Machined constructions - ISO 2768-1mK

Ytfinhet Ra om ej annat anges

Ra = 10

Ytbehandling

Method Colour Glans

BLACK RAL9005

Material

S 355

Additional information

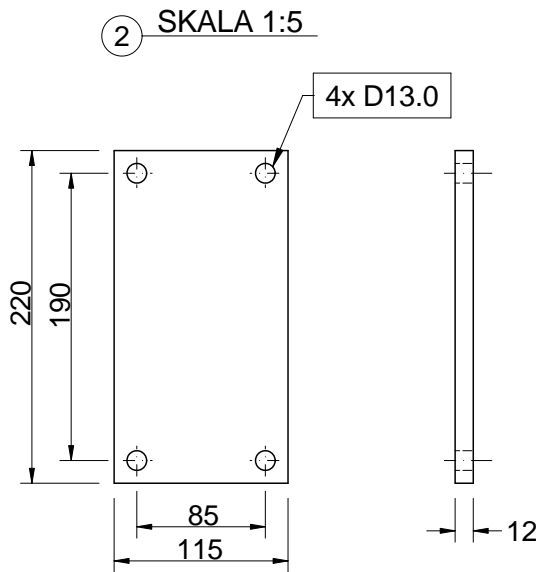
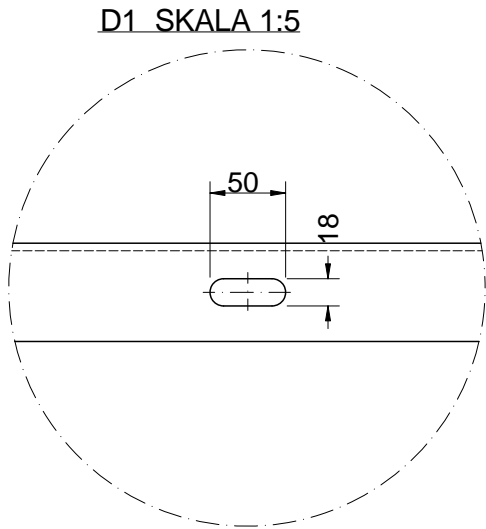
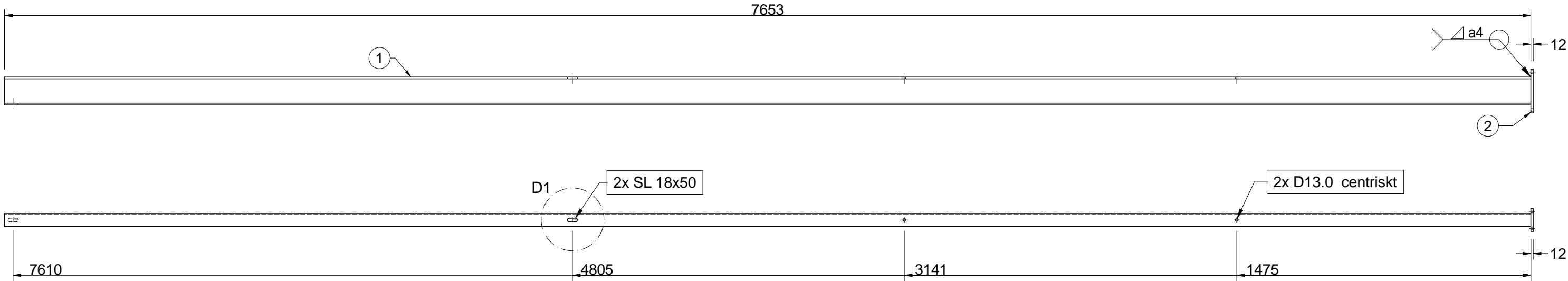
Skarpa kanter brytes

Weight

109 kg

B			
A	NP	Release	2026-04-06
Rev	By	Comment	Date
Revisions			

Design by:	Date:	Scale:	
N. Philipson	2026-04-06	1:20	
Drawn by:	Format	Sheet	Nr.
N. Philipson	A3	1	PF-126-116
			Rev.
			A



SPEGELVÄND TILL ID8

3					
2	1	Plåt	S355J2	PL 220x115 t=12.0	
1	1	Balk	S355 N	UPE 140 L=7653	
Det nr	Qty/Unit	Item	Supplier/Materiel	Reference	Rev

EAST SIDE TECHNOLOGY

mail@eastsidetechnology.com

Project:
DANSENS HUS - STUDIOSCENEN

Element: BÄRVERK
Description: ID 7

General notes

Number of units needed

4

Toleranser om ej annat anges

Welded constructions - ISO 13920- class A
Machined constructions - ISO 2768-1mK

Ytfinhet Ra om ej annat anges

Ra = 10

Ytbehandling

Method Colour Glans

BLACK RAL9005

Material

S 355

Additional information

Skarpa kanter brytes

Weight

113 kg

Design by:

N. Philipson

Date:

2026-04-06

Scale:

1:20

Drawn by:

N. Philipson

Format

A3

Sheet

1

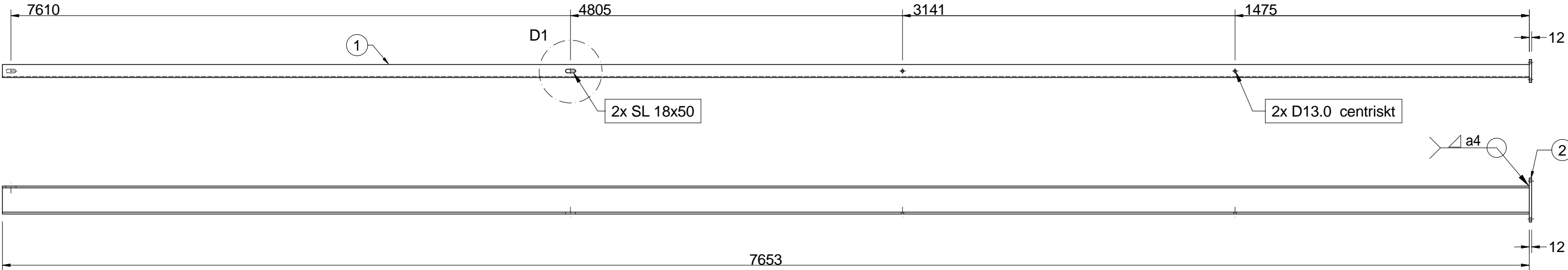
Nr.

PF-126-117

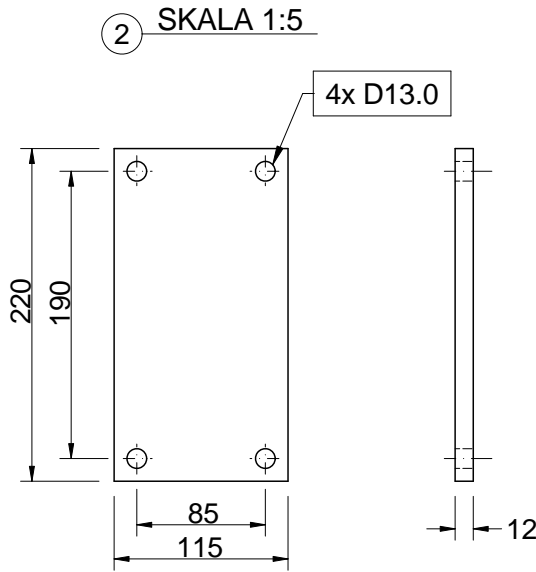
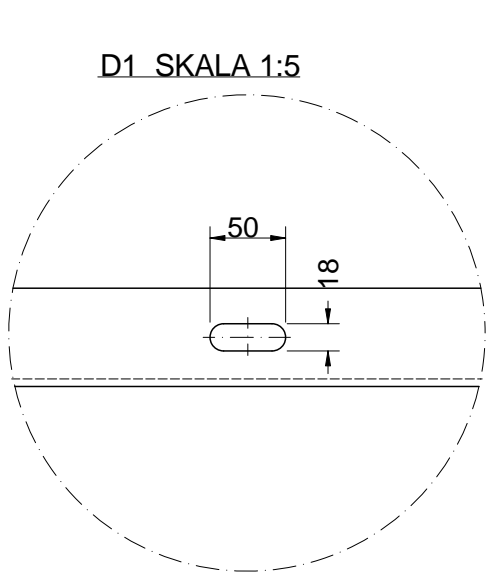
Rev.

A

B			
A	NP	Release	2026-04-06
Rev	By	Comment	Date
Revisions			

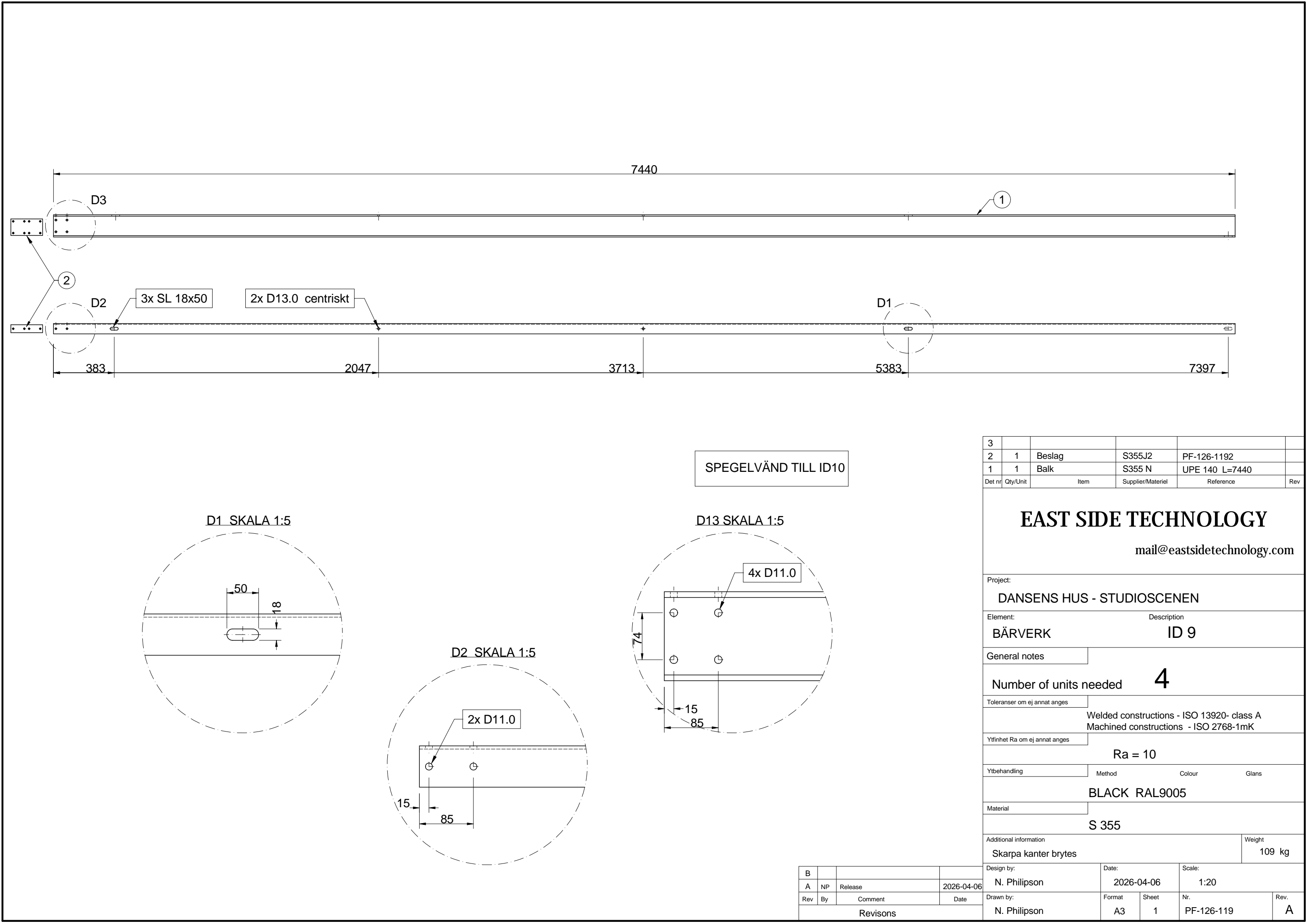


SPEGELVÄND TILL ID7

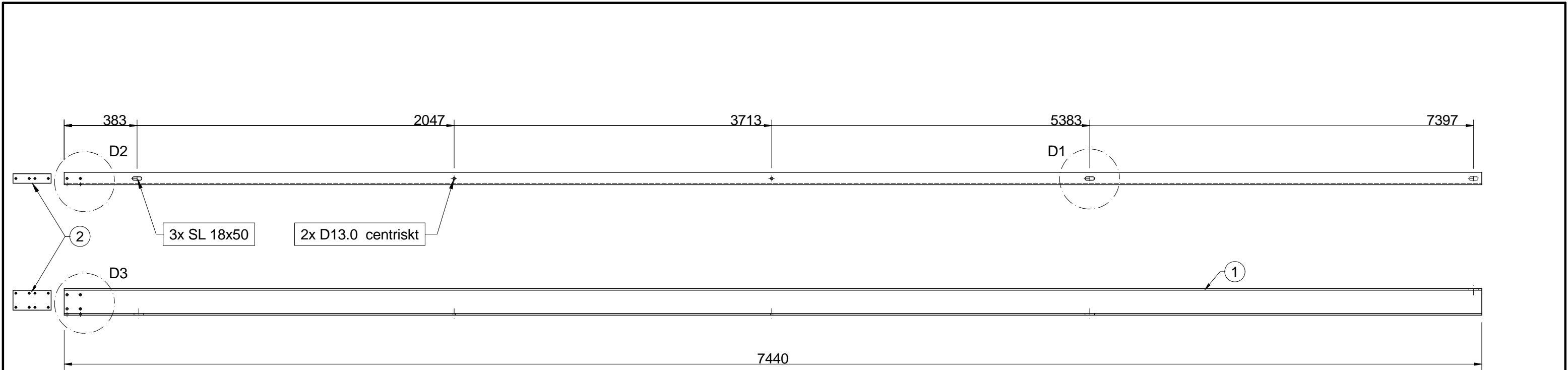


3					
2	1	Plåt	S355J2	PL 220x115 t=12.0	
1	1	Balk	S355 N	UPE 140 L=7653	
Det nr	Qty/Unit	Item	Supplier/Materiel	Reference	Rev
<div>EAST SIDE TECHNOLOGY</div> <div>mail@eastsidetechnology.com</div>					
Project: <div>DANSENS HUS - STUDIOSCENEN</div>					
Element: <div>BÄRVERK</div>			Description <div>ID 8</div>		
General notes					
Number of units needed			4		
Toleranser om ej annat anges					
			Welded constructions - ISO 13920- class A Machined constructions - ISO 2768-1mK		
Ytfinhet Ra om ej annat anges					
			Ra = 10		
Ytbehandling			Method	Colour	Glans
			BLACK RAL9005		
Material					
			S 355		
Additional information <div>Skarpa kanter brytes</div>				Weight <div>113 kg</div>	
Design by: <div>N. Philipson</div>			Date: <div>2026-04-06</div>		Scale: <div>1:20</div>
Drawn by: <div>N. Philipson</div>			Format <div>A3</div>	Sheet <div>1</div>	Nr. <div>PF-126-118</div>
					Rev. <div>A</div>

B			
A	NP	Release	2026-04-06
Rev	By	Comment	Date
Revisions			

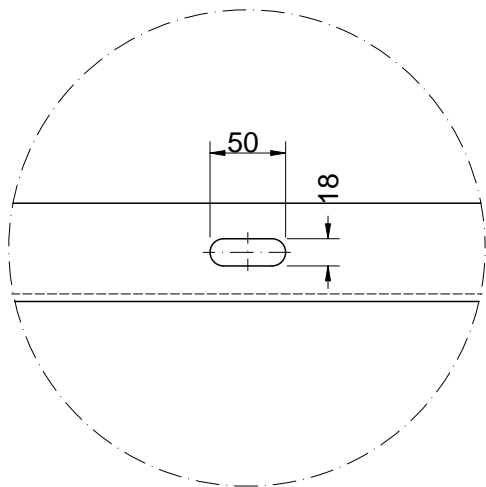


3					
2	1	Beslag	S355J2	PF-126-1192	
1	1	Balk	S355 N	UPE 140 L=7440	
Det nr	Qty/Unit	Item	Supplier/Materiel	Reference	Rev
<div>EAST SIDE TECHNOLOGY</div> <div>mail@eastsidetechnology.com</div>					
Project: <div>DANSENS HUS - STUDIOSCENEN</div>					
Element: <div>BÄRVERK</div>			Description <div>ID 9</div>		
General notes					
Number of units needed		4			
Toleranser om ej annat anges					
		Welded constructions - ISO 13920- class A Machined constructions - ISO 2768-1mK			
Ytfinhet Ra om ej annat anges					
		Ra = 10			
Ytbehandling		Method	Colour	Glans	
		BLACK RAL9005			
Material					
		S 355			
Additional information <div>Skarpa kanter brytes</div>				Weight <div>109 kg</div>	
Design by: <div>N. Philipson</div>			Date: <div>2026-04-06</div>		Scale: <div>1:20</div>
Drawn by: <div>N. Philipson</div>			Format <div>A3</div>	Sheet <div>1</div>	Nr. <div>PF-126-119</div>
				Rev. <div>A</div>	

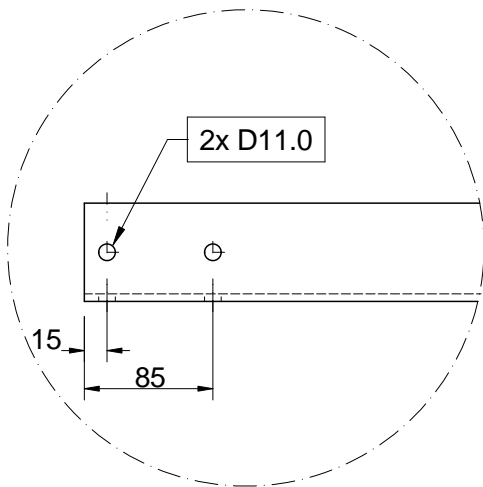


SPEGELVÄND TILL ID9

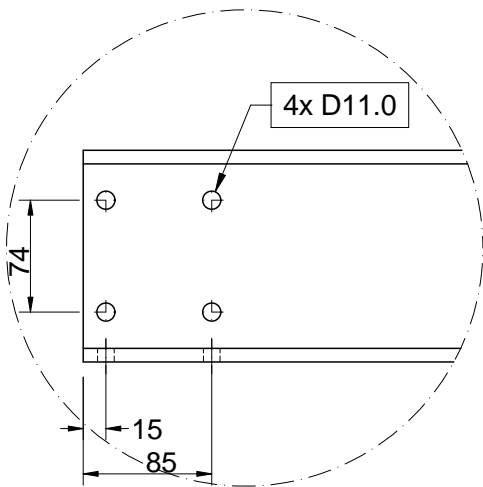
D1 SKALA 1:5



D2 SKALA 1:5



D13 SKALA 1:5



3					
2	1	Beslag	S355J2	PF-126-1192	
1	1	Balk	S355 N	UPE 140 L=7440	
Det nr	Qty/Unit	Item	Supplier/Materiel	Reference	Rev

EAST SIDE TECHNOLOGY

mail@eastside technology.com

Project:
DANSENS HUS - STUDIOSCENEN

Element: BÄRVERK
Description: ID 10

General notes

Number of units needed

4

Toleranser om ej annat anges

Welded constructions - ISO 13920- class A
Machined constructions - ISO 2768-1mK

Ytfinhet Ra om ej annat anges

Ra = 10

Ytbehandling

Method Colour Glans

BLACK RAL9005

Material

S 355

Additional information

Skarpa kanter brytes

Weight

109 kg

Design by:

N. Philipson

Date:

2026-04-06

Scale:

1:20

Drawn by:

N. Philipson

Format

A3

Sheet

1

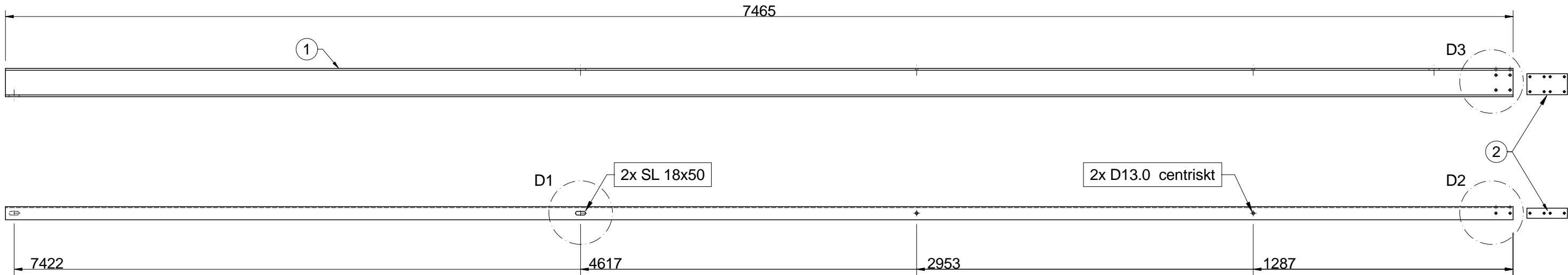
Nr.

PF-126-120

Rev.

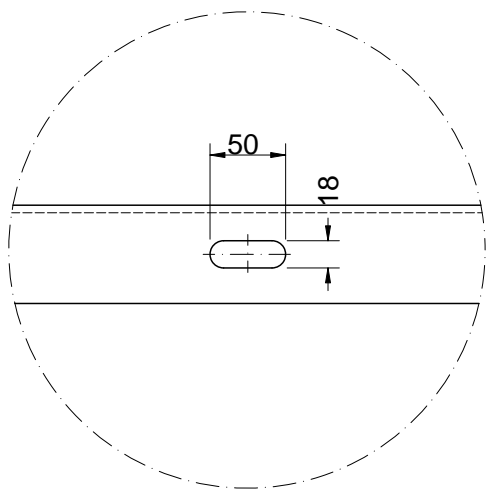
A

B			
A	NP	Release	2026-04-06
Rev	By	Comment	Date
Revisions			

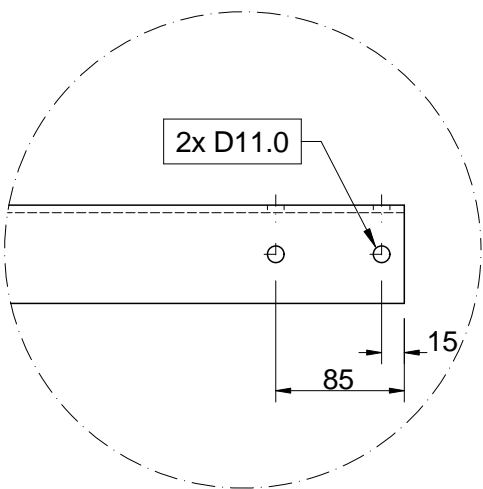


SPEGELVÄND TILL ID10

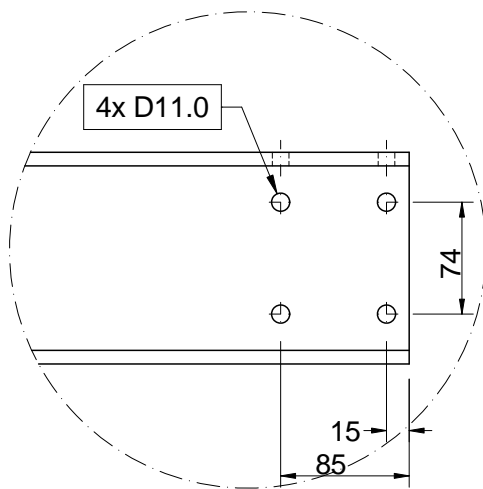
D1 SKALA 1:5



D2 SKALA 1:5



D13 SKALA 1:5



3					
2	1	Beslag	S355J2	PF-126-1192	
1	1	Balk	S355 N	UPE 140 L=7465	
Det nr	Qty/Unit	Item	Supplier/Materiel	Reference	Rev

EAST SIDE TECHNOLOGY

mail@eastside technology.com

Project:
DANSENS HUS - STUDIO SCENEN

Element: BÄRVERK
Description: ID 11

General notes

Number of units needed

4

Toleranser om ej annat anges

Welded constructions - ISO 13920- class A
Machined constructions - ISO 2768-1mK

Ytfinhet Ra om ej annat anges

Ra = 10

Ytbehandling

Method

Colour

Glans

BLACK RAL9005

Material

S 355

Additional information

Skarpa kanter brytes

Weight

109 kg

Design by:

N. Philipson

Date:

2026-04-06

Scale:

1:20

Drawn by:

N. Philipson

Format

A3

Sheet

1

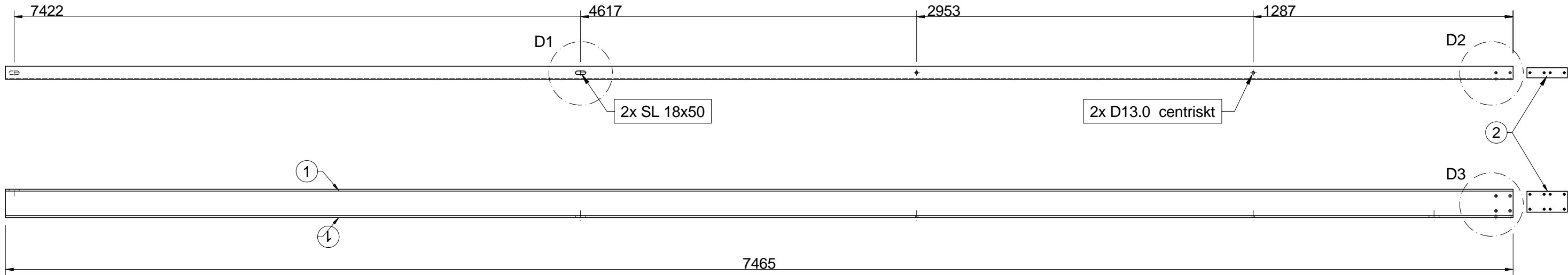
Nr.

PF-126-121

Rev.

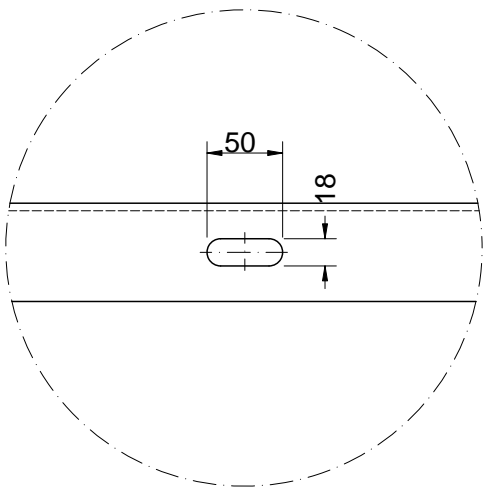
A

B			
A	NP	Release	2026-04-06
Rev	By	Comment	Date
Revisions			

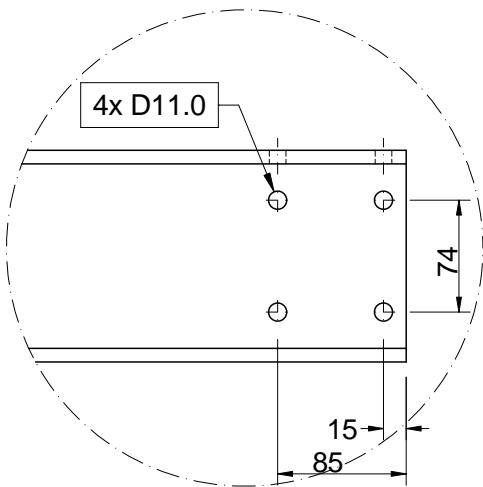


SPEGELVÄND TILL ID10

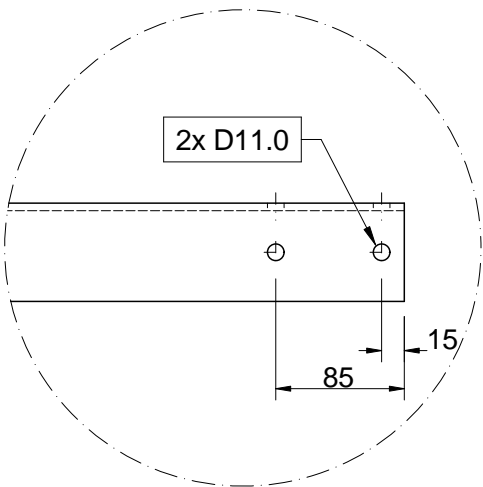
D1 SKALA 1:5



D13 SKALA 1:5

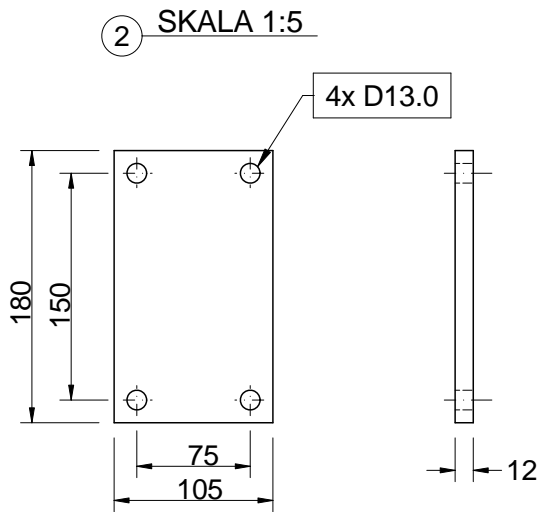
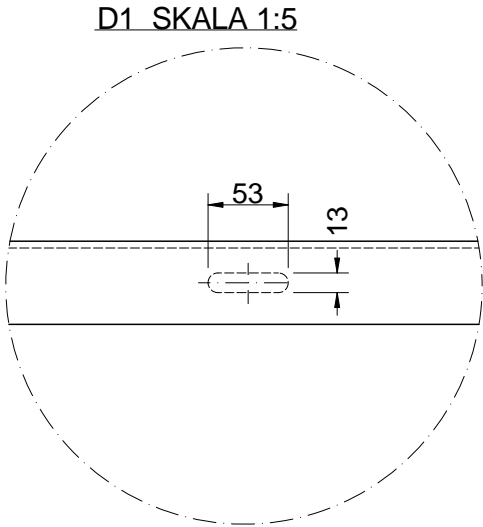
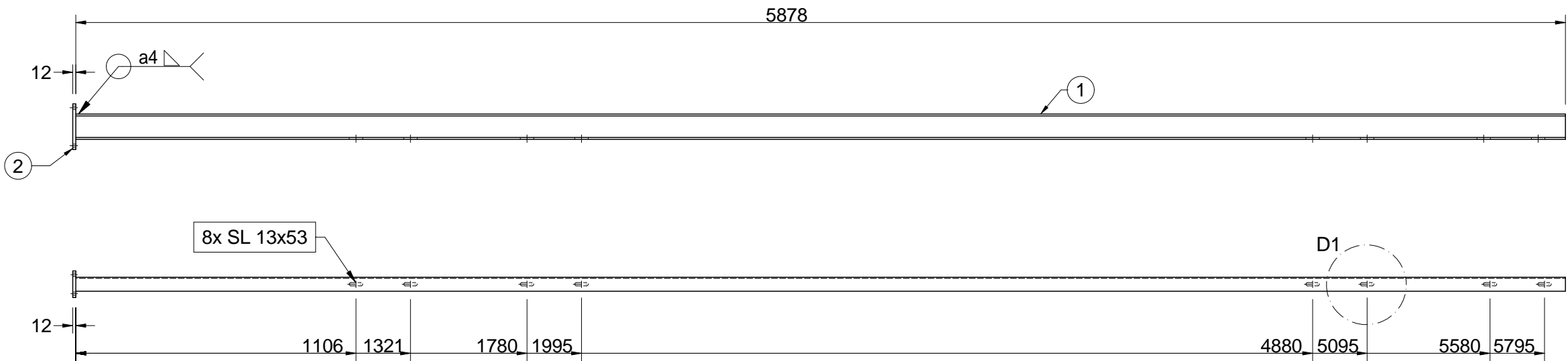


D2 SKALA 1:5



3					
2	1	Beslag	S355J2	PF-126-1192	
1	1	Balk	S355 N	UPE 140 L=7465	
Det nr	Qty/Unit	Item	Supplier/Materiel	Reference	Rev
<div>EAST SIDE TECHNOLOGY</div> <div>mail@eastsidetechnology.com</div>					
Project: <div>DANSENS HUS - STUDIOSCENEN</div>					
Element: <div>BÄRVERK</div>			Description <div>ID 12</div>		
General notes					
Number of units needed		4			
Toleranser om ej annat anges					
		Welded constructions - ISO 13920- class A Machined constructions - ISO 2768-1mK			
Ytfinhet Ra om ej annat anges					
		Ra = 10			
Ytbehandling		Method	Colour	Glans	
		BLACK RAL9005			
Material					
		S 355			
Additional information <div>Skarpa kanter brytes</div>				Weight <div>109 kg</div>	
Design by: <div>N. Philipson</div>			Date: <div>2026-04-06</div>		Scale: <div>1:20</div>
Drawn by: <div>N. Philipson</div>			Format <div>A3</div>	Sheet <div>1</div>	Nr. <div>PF-126-122</div>
					Rev. <div>A</div>

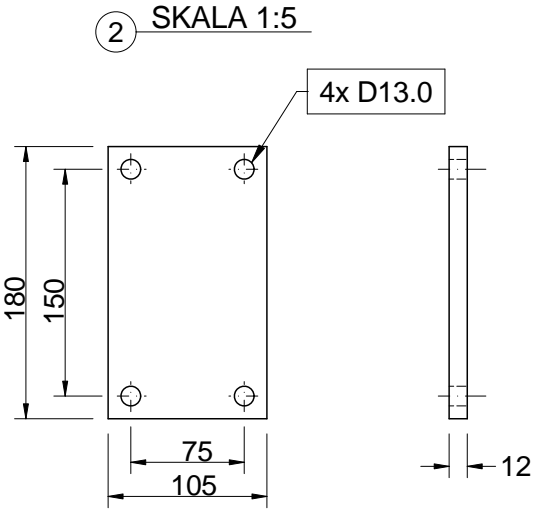
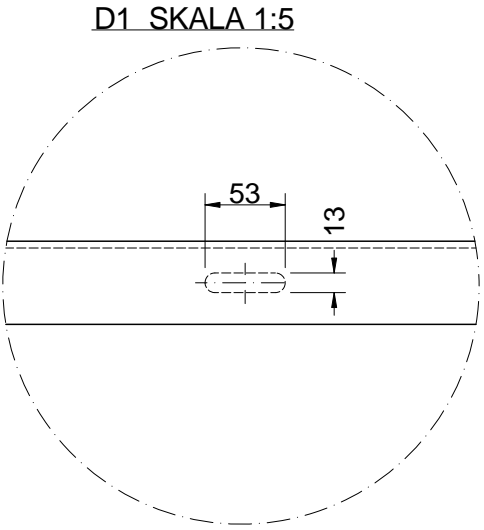
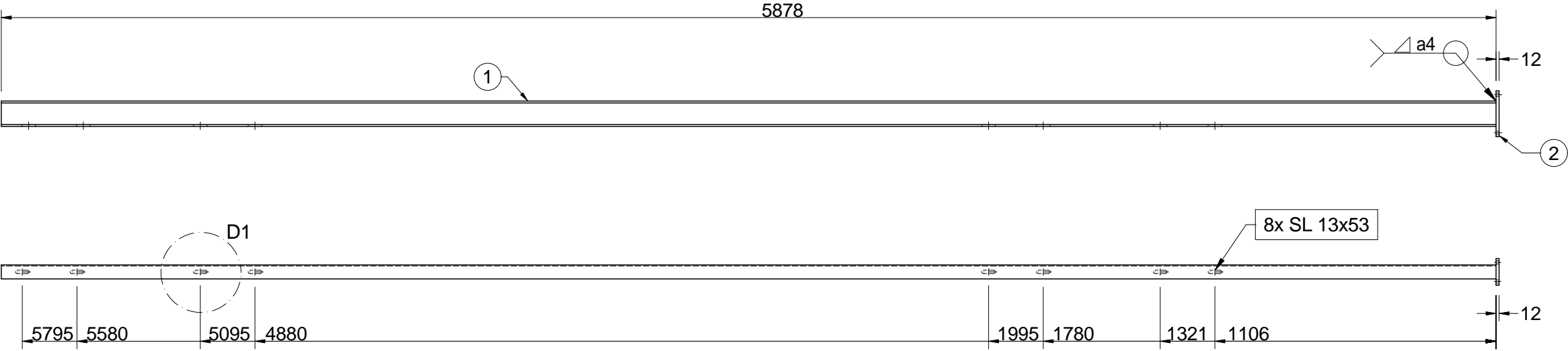
B			
A	NP	Release	2026-04-06
Rev	By	Comment	Date
Revisions			



SPEGELVÄND TILL ID14

3					
2	1	Plåt	S355J2	PL 190x105 t=12.0	
1	1	Balk	S355 N	UPE 100 L=5878	
Det nr	Qty/Unit	Item	Supplier/Materiel	Reference	Rev
<div>EAST SIDE TECHNOLOGY</div> <div>mail@eastsidetechnology.com</div>					
Project: <div>DANSENS HUS - STUDIOSCENEN</div>					
Element: <div>BÄRVERK</div>			Description <div>ID 13</div>		
General notes					
Number of units needed			4		
Toleranser om ej annat anges					
			Welded constructions - ISO 13920- class A Machined constructions - ISO 2768-1mK		
Ytfinhet Ra om ej annat anges					
			Ra = 10		
Ytbehandling			Method	Colour	Glans
			BLACK RAL9005		
Material					
			S 355		
Additional information <div>Skarpa kanter brytes</div>				Weight <div>60 kg</div>	
Design by: <div>N. Philipson</div>			Date: <div>2026-04-06</div>		Scale: <div>1:20</div>
Drawn by: <div>N. Philipson</div>			Format <div>A3</div>	Sheet <div>1</div>	Nr. <div>PF-126-123</div>
					Rev. <div>A</div>

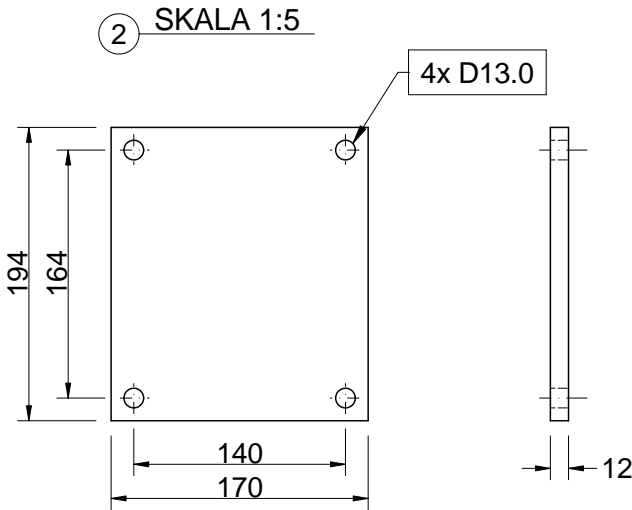
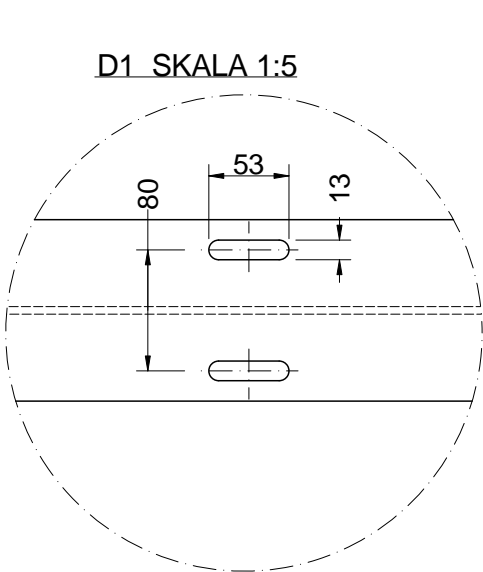
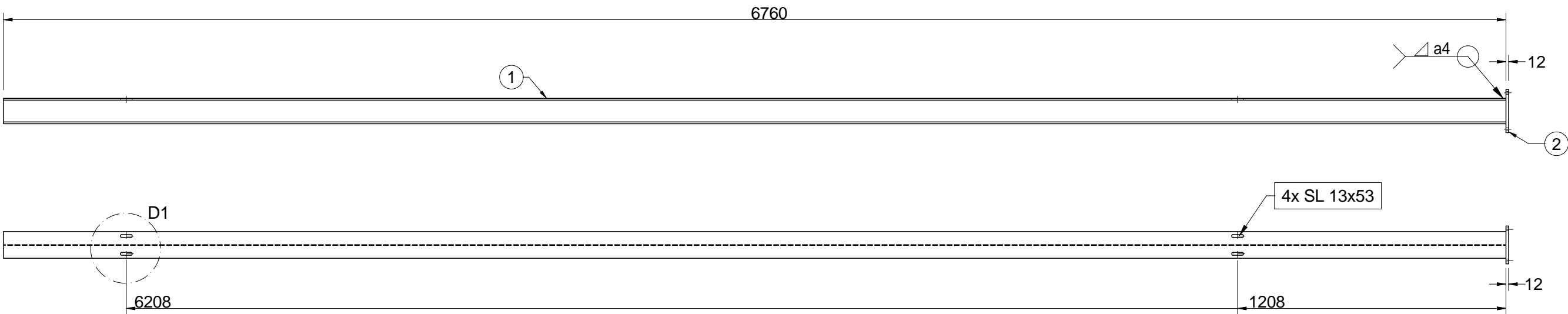
B			
A	NP	Release	2026-04-06
Rev	By	Comment	Date
Revisions			



SPEGELVÄND TILL ID13

3					
2	1	Plåt	S355J2	PL 190x105 t=12.0	
1	1	Balk	S355 N	UPE 100 L=5878	
Det nr	Qty/Unit	Item	Supplier/Materiel	Reference	Rev
<div>EAST SIDE TECHNOLOGY</div> <div>mail@eastsidetechnology.com</div>					
Project: <div>DANSENS HUS - STUDIOSCENEN</div>					
Element: <div>BÄRVERK</div>			Description <div>ID 14</div>		
General notes					
Number of units needed			4		
Toleranser om ej annat anges					
			Welded constructions - ISO 13920- class A Machined constructions - ISO 2768-1mK		
Ytfinhet Ra om ej annat anges					
			Ra = 10		
Ytbehandling			Method	Colour	Glans
			BLACK RAL9005		
Material					
			S 355		
Additional information <div>Skarpa kanter brytes</div>				Weight <div>60 kg</div>	
Design by: <div>N. Philipson</div>		Date: <div>2026-04-06</div>		Scale: <div>1:20</div>	
Drawn by: <div>N. Philipson</div>		Format <div>A3</div>	Sheet <div>1</div>	Nr. <div>PF-126-124</div>	Rev. <div>A</div>

B			
A	NP	Release	2026-04-06
Rev	By	Comment	Date
Revisions			



3					
2	1	Plåt	S355J2	PL 194x170 t=12.0	
1	1	Balk	S355 N	HEA 120 L=6760	
Det nr	Qty/Unit	Item	Supplier/Materiel	Reference	Rev

EAST SIDE TECHNOLOGY

mail@eastside technology.com

Project:
DANSENS HUS - STUDIO SCENEN

Element: BÄRVERK
Description: ID 15

General notes

Number of units needed 2

Toleranser om ej annat anges

Welded constructions - ISO 13920- class A
Machined constructions - ISO 2768-1mK

Ytfinhet Ra om ej annat anges

Ra = 10

Ytbehandling

Method Colour Glans

BLACK RAL9005

Material

S 355

Additional information

Skarpa kanter brytes

Weight

138 kg

Design by:

N. Philipson

Date:

2026-04-06

Scale:

1:20

Drawn by:

N. Philipson

Format

A3

Sheet

1

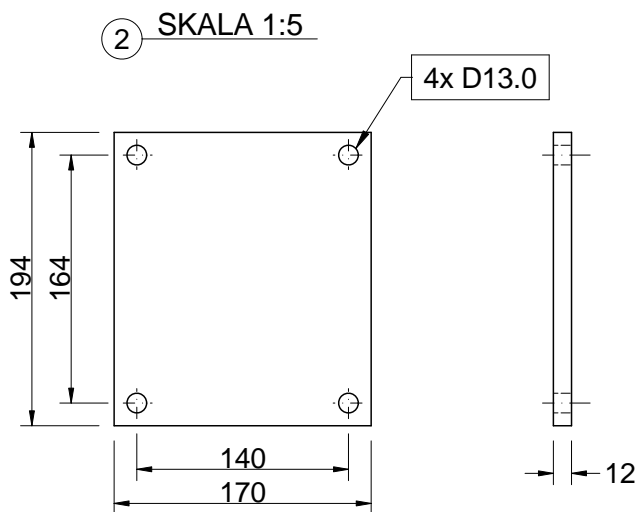
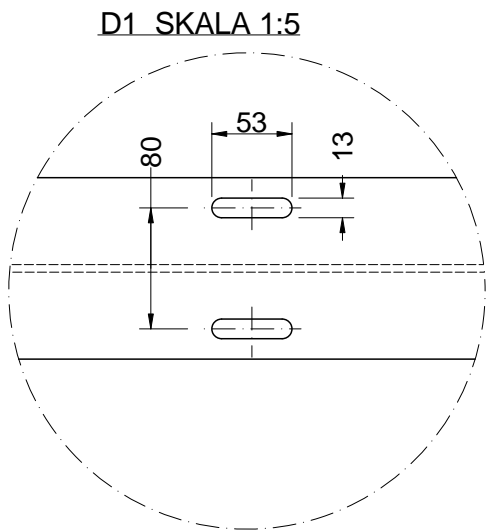
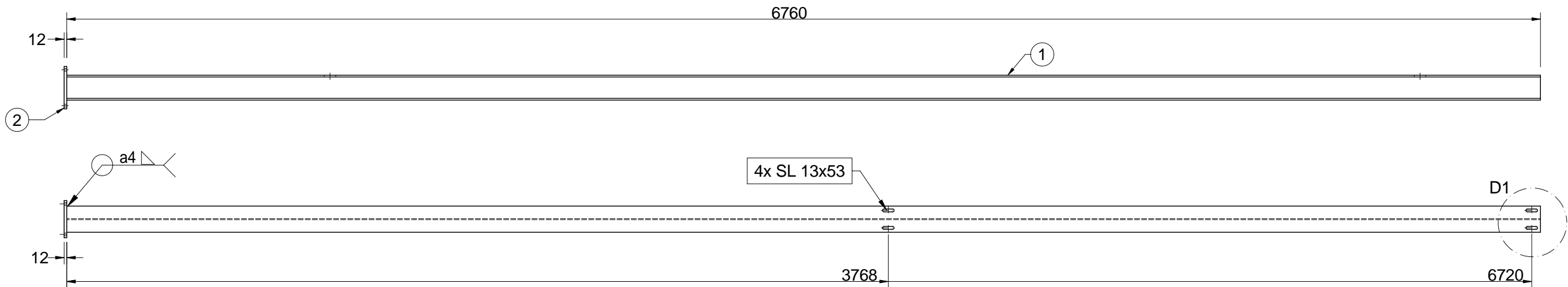
Nr.

PF-126-125

Rev.

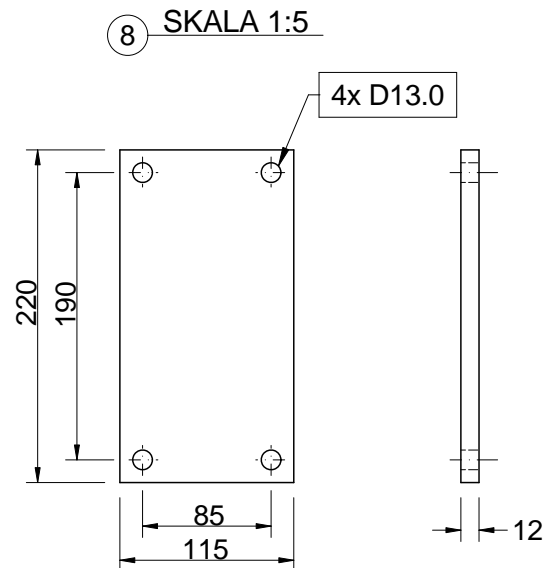
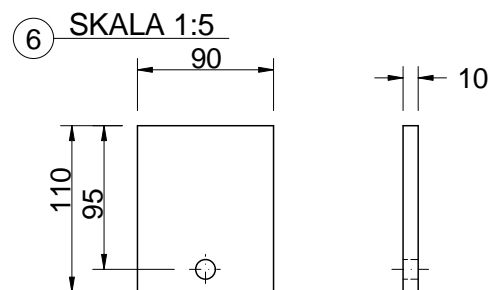
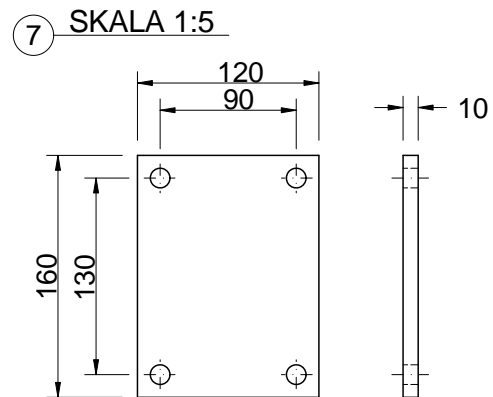
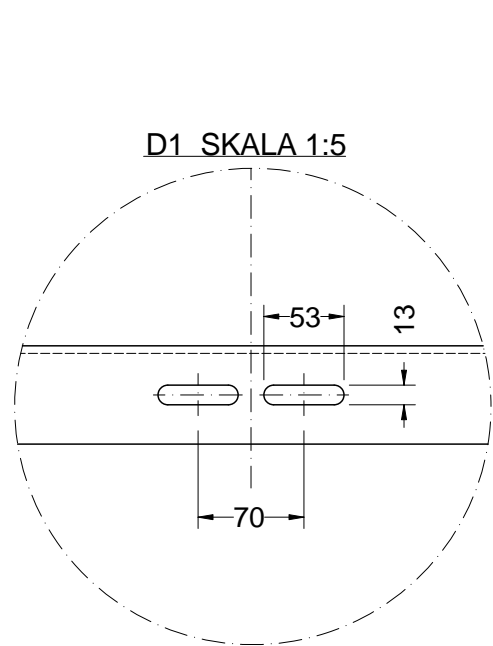
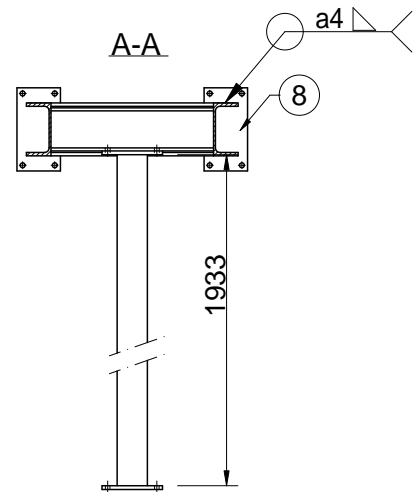
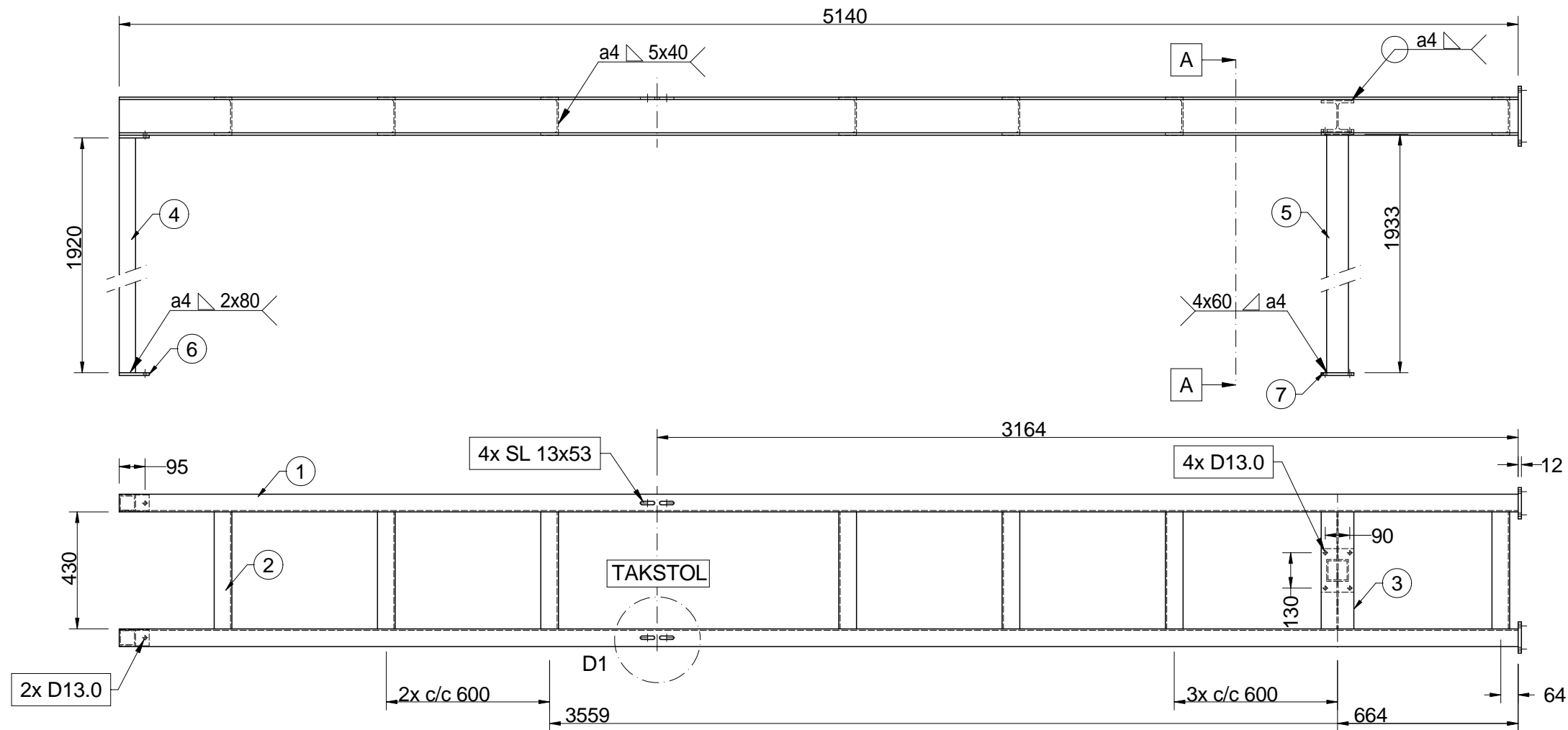
A

B			
A	NP	Release	2026-04-06
Rev	By	Comment	Date
Revisions			



3					
2	1	Plåt	S355J2	PL 194x170 t=12.0	
1	1	Balk	S355 N	HEA 120 L=6760	
Det nr	Qty/Unit	Item	Supplier/Materiel	Reference	Rev
<div>EAST SIDE TECHNOLOGY</div> <div>mail@eastsidetechnology.com</div>					
Project:					
DANSENS HUS - STUDIOSCENEN					
Element:			Description		
BÄRVERK			ID 16		
General notes					
Number of units needed			2		
Toleranser om ej annat anges					
			Welded constructions - ISO 13920- class A Machined constructions - ISO 2768-1mK		
Ytfinhet Ra om ej annat anges					
			Ra = 10		
Ytbehandling			Method	Colour	Glans
			BLACK RAL9005		
Material					
			S 355		
Additional information				Weight	
Skarpa kanter brytes				138 kg	
Design by:			Date:		Scale:
N. Philipson			2026-04-06		1:20
Drawn by:			Format	Sheet	Nr.
N. Philipson			A3	1	PF-126-126
					Rev.
					A

B			
A	NP	Release	2026-04-06
Rev	By	Comment	Date
Revisions			



9					
8	2	Plåt	S355J2	PL 220x115 t=12.0	
7	2	Plåt	S355J2	PL 160x120 t=10.0	
6	4	Plåt	S355J2	PL 110x90 t=10.0	
5	1	VKR	S355J2H	SQ 80x80x4.0 L=1933	
4	2	VKR	S355J2H	SQ 80x80x4.0 L=1920	
3	1	Balk	S355J2	HEA 120 L=430	
2	7	Balk	S355 N	UPE 140 L=430	
1	2	Balk	S355 N	UPE 140 L=5140	
Det nr	Qty/Unit	Item	Supplier/Materiel	Reference	Rev

EAST SIDE TECHNOLOGY

mail@eastside technology.com

Project:

DANSENS HUS - STUDIO SCENEN

Element:

BÄRVERK

Description

ID 17

General notes

Number of units needed

1

Toleranser om ej annat anges

Welded constructions - ISO 13920- class A
Machined constructions - ISO 2768-1mK

Ytfinhet Ra om ej annat anges

Ra = 10

Ytbehandling

Method

Colour

Gloss

BLACK RAL9005

Material

S 355

Additional information

Skarpa kanter brytes

Weight

138 kg

Design by:

N. Philipson

Date:

2026-04-06

Scale:

1:20

Drawn by:

N. Philipson

Format

A3

Sheet

1

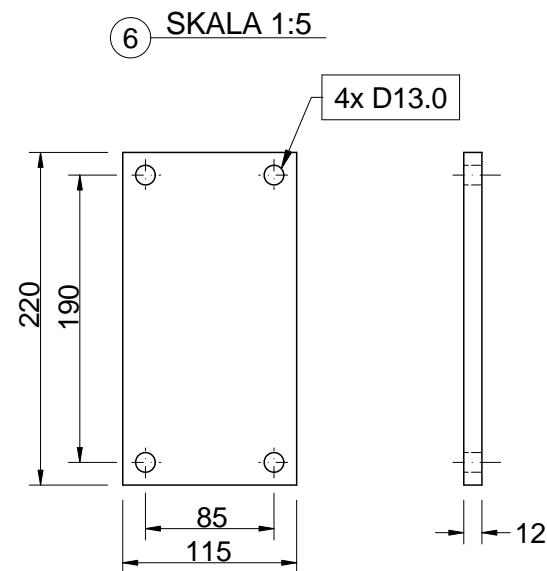
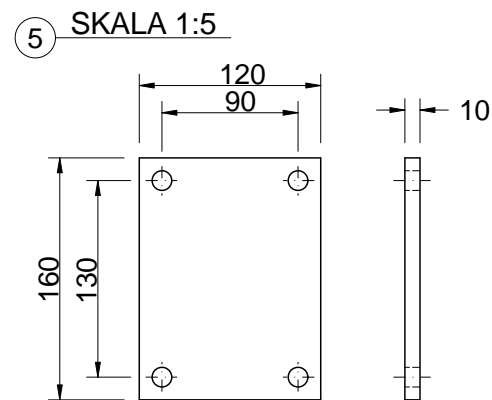
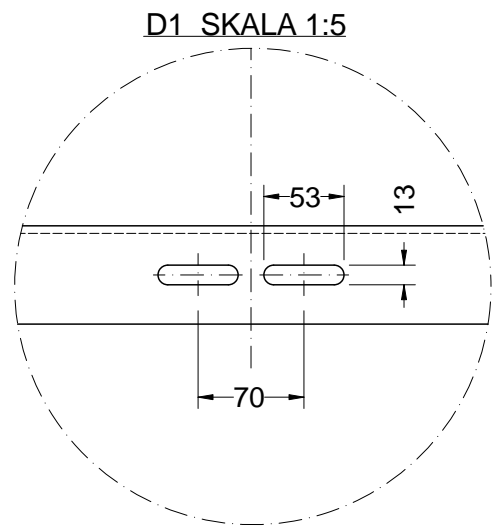
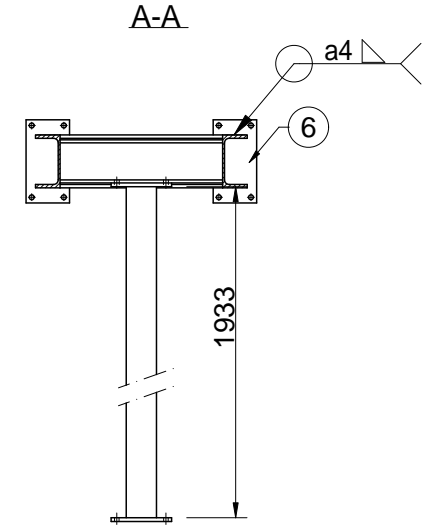
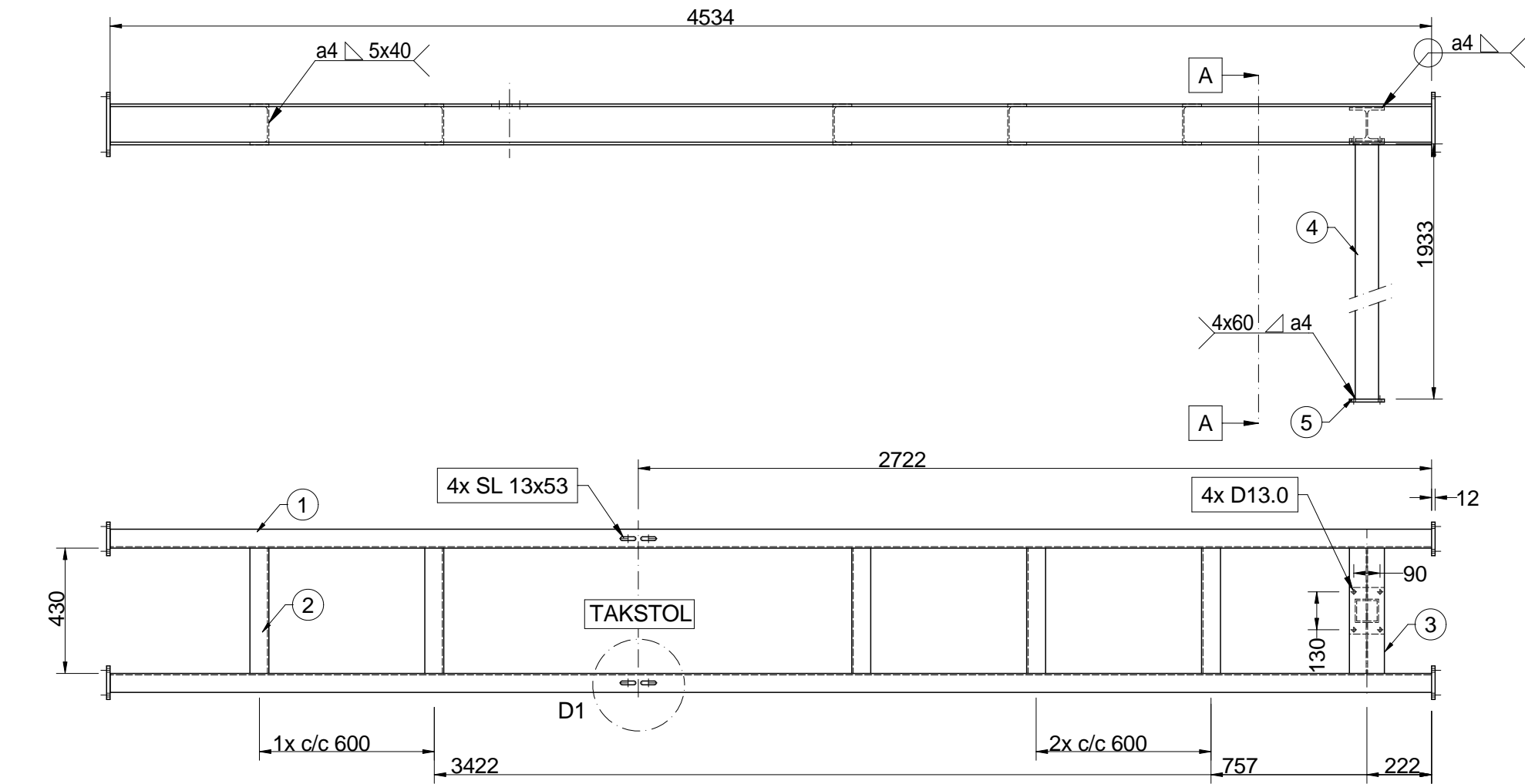
Nr.

PF-126-127

Rev.

A

B			
A	NP	Release	2026-04-06
Rev	By	Comment	Date
Revisions			



9					
8					
7					
6	4	Plåt	S355J2	PL 220x115 t=12.0	
5	2	Plåt	S355J2	PL 160x120 t=10.0	
4	1	VKR	S355J2H	SQ 80x80x4.0 L=1933	
3	1	Balk	S355J2	HEA 120 L=430	
2	5	Balk	S355 N	UPE 140 L=430	
1	2	Balk	S355 N	UPE 140 L=4534	
Det nr	Qty/Unit	Item	Supplier/Materiel	Reference	Rev

EAST SIDE TECHNOLOGY

mail@eastside technology.com

Project:

DANSENS HUS - STUDIO SCENEN

Element:

BÄRVERK

Description

ID 18

General notes

Number of units needed

1

Toleranser om ej annat anges

Welded constructions - ISO 13920- class A
Machined constructions - ISO 2768-1mK

Ytfinhet Ra om ej annat anges

Ra = 10

Ytbehandling

Method

Colour

Glans

BLACK RAL9005

Material

S 355

Additional information

Skarpa kanter brytes

Weight

138 kg

Design by:

N. Philipson

Date:

2026-04-06

Scale:

1:20

Drawn by:

N. Philipson

Format

A3

Sheet

1

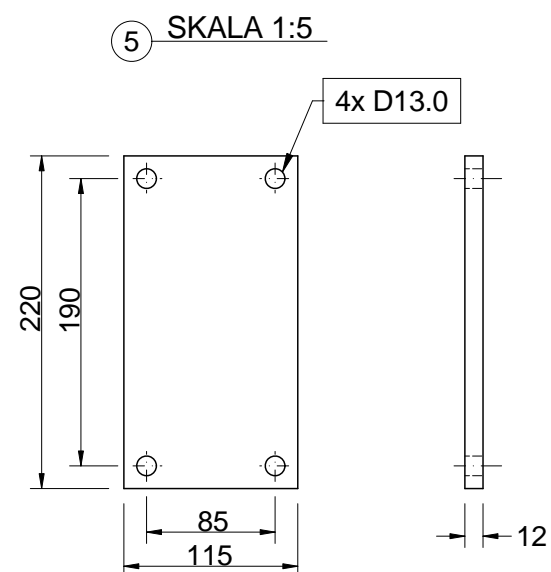
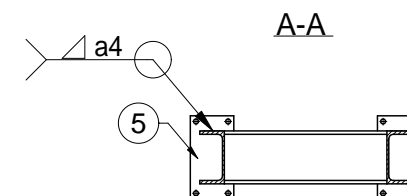
Nr.

PF-126-128

Rev.

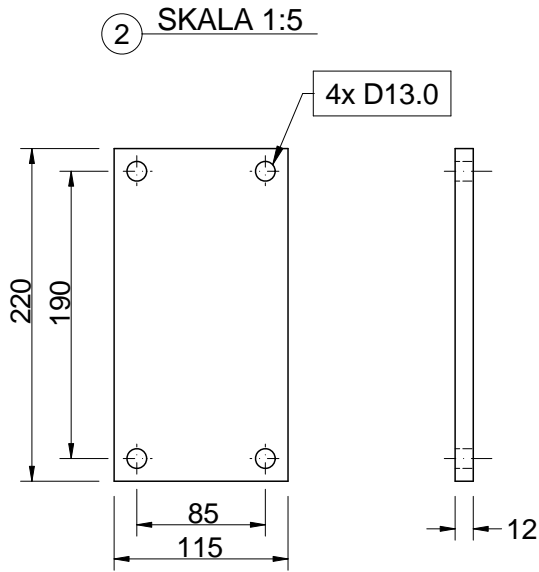
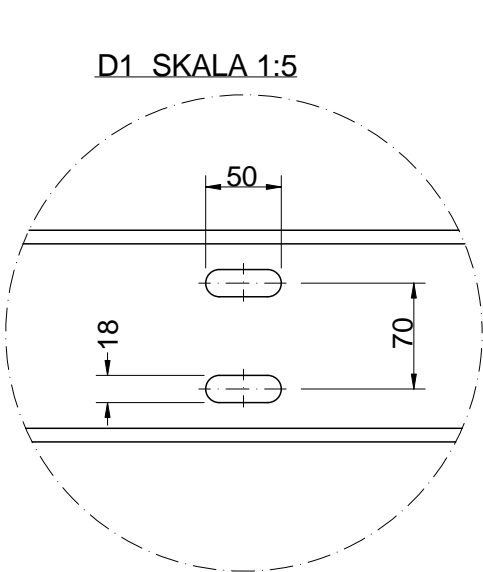
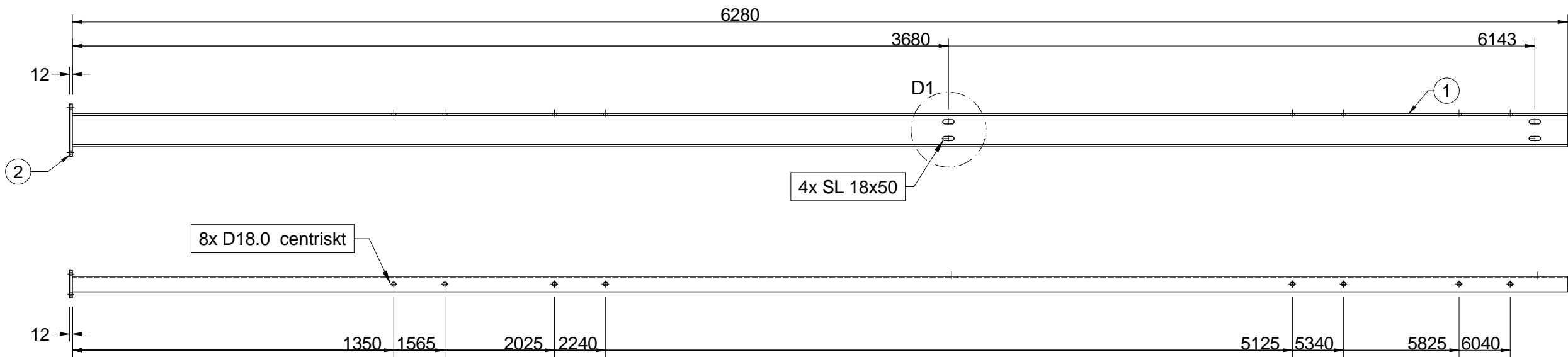
A

B			
A	NP	Release	2026-04-06
Rev	By	Comment	Date
Revisions			



9					
8					
7					
6					
5	2	Plåt	S355J2	PL 220x115 t=12.0	
4	4	Plåt	S355J2	PL 110x90 t=10.0	
3	2	VKR	S355J2H	SQ 80x80x4.0 L=1920	
2	7	Balk	S355 N	UPE 140 L=430	
1	2	Balk	S355 N	UPE 140 L=5140	
Det nr	Qty/Unit	Item	Supplier/Materiel	Reference	Re

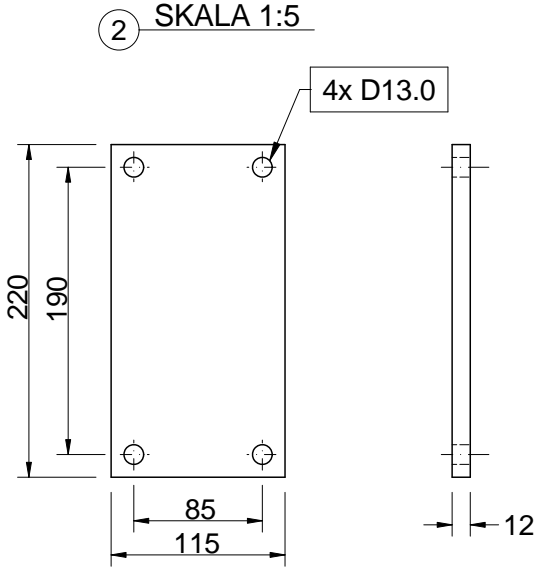
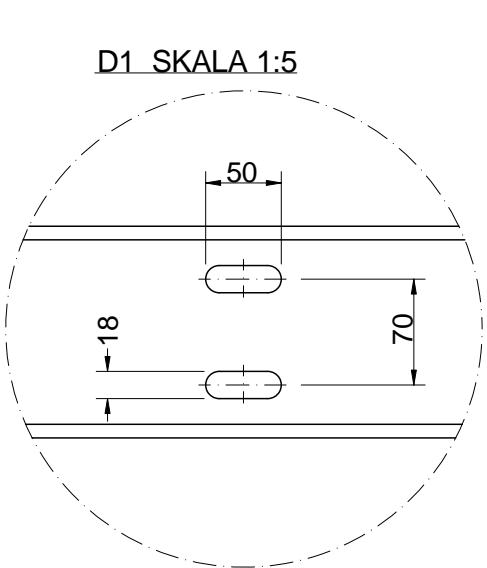
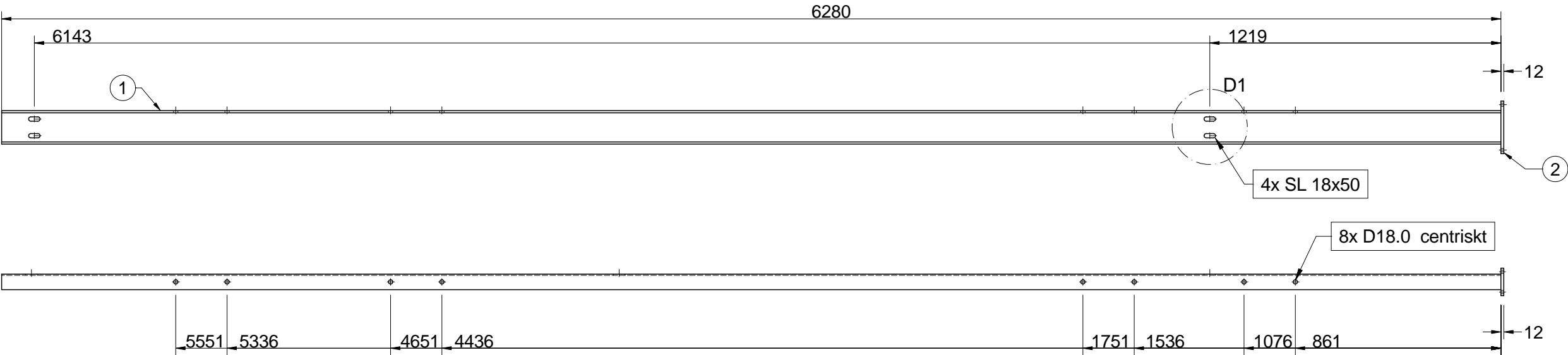
B			
A	NP	Release	2026-04-06
Rev	By	Comment	Date
Revisions			



SPEGELVÄND TILL ID22

3					
2	1	Plåt	S355J2	PL 220x115 t=12.0	
1	1	Balk	S355 N	UPE 140 L=6280	
Det nr	Qty/Unit	Item	Supplier/Materiel	Reference	Rev
<div>EAST SIDE TECHNOLOGY</div> <div>mail@eastsidetechnology.com</div>					
Project: <div>DANSENS HUS - STUDIOSCENEN</div>					
Element: <div>BÄRVERK</div>			Description <div>ID 20</div>		
General notes					
Number of units needed		1			
Toleranser om ej annat anges		Welded constructions - ISO 13920- class A Machined constructions - ISO 2768-1mK			
Ytfinhet Ra om ej annat anges		Ra = 10			
Ytbehandling		Method	Colour	Glans	
BLACK RAL9005					
Material		S 355			
Additional information <div>Skarpa kanter brytes</div>				Weight <div>93 kg</div>	
Design by: <div>N. Philipson</div>		Date: <div>2026-04-06</div>		Scale: <div>1:20</div>	
Drawn by: <div>N. Philipson</div>		Format <div>A3</div>	Sheet <div>1</div>	Nr. <div>PF-126-130</div>	Rev. <div>A</div>

B			
A	NP	Release	2026-04-06
Rev	By	Comment	Date
Revisions			



SPEGELVÄND TILL ID23

3					
2	1	Plåt	S355J2	PL 220x115 t=12.0	
1	1	Balk	S355 N	UPE 140 L=6280	
Det nr	Qty/Unit	Item	Supplier/Materiel	Reference	Rev

EAST SIDE TECHNOLOGY

mail@eastside technology.com

Project:
DANSENS HUS - STUDIOSCENEN

Element: BÄRVERK
Description: ID 21

General notes

Number of units needed 1

Toleranser om ej annat anges
Welded constructions - ISO 13920- class A
Machined constructions - ISO 2768-1mK

Ytfinhet Ra om ej annat anges
Ra = 10

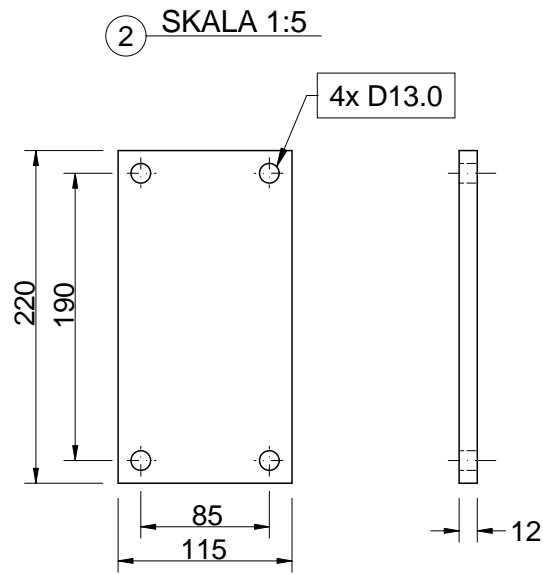
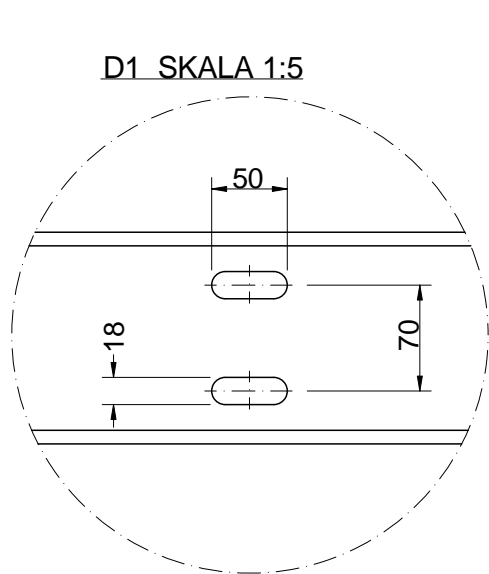
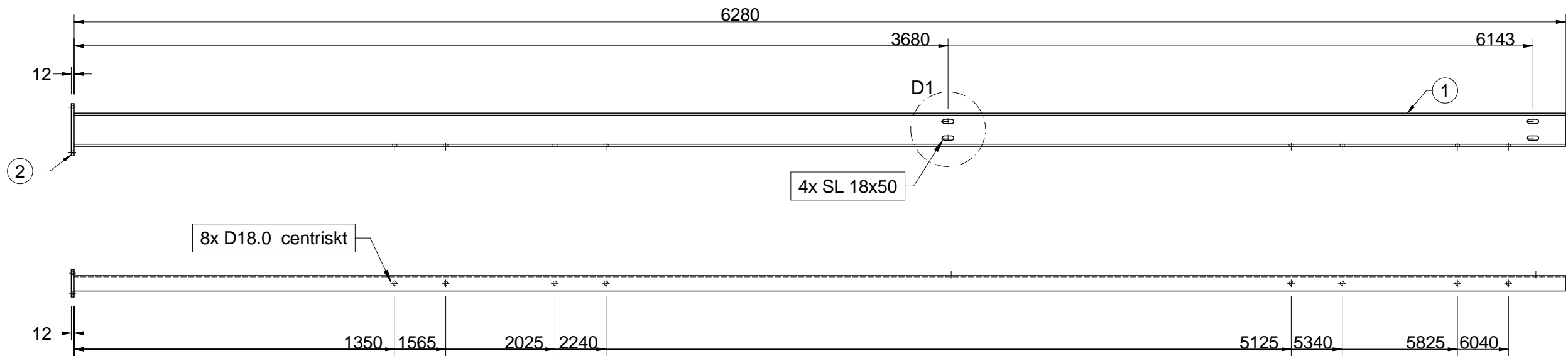
Ytbehandling Method Colour Glans
BLACK RAL9005

Material
S 355

Additional information
Skarpa kanter brytes Weight 93 kg

Design by:	Date:	Scale:	
N. Philipson	2026-04-06	1:20	
Drawn by:	Format	Sheet	Nr.
N. Philipson	A3	1	PF-126-131
			Rev.
			A

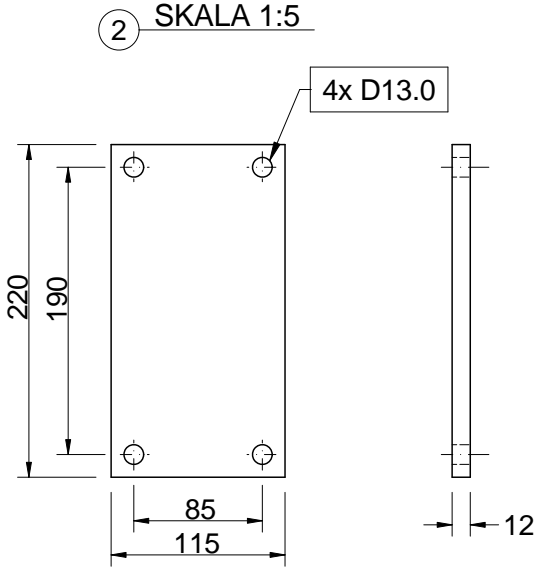
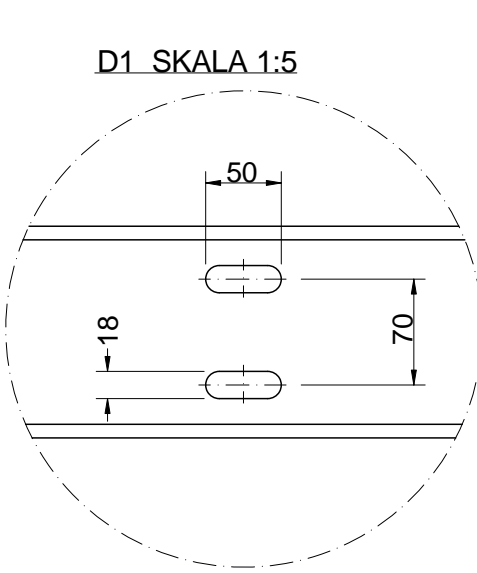
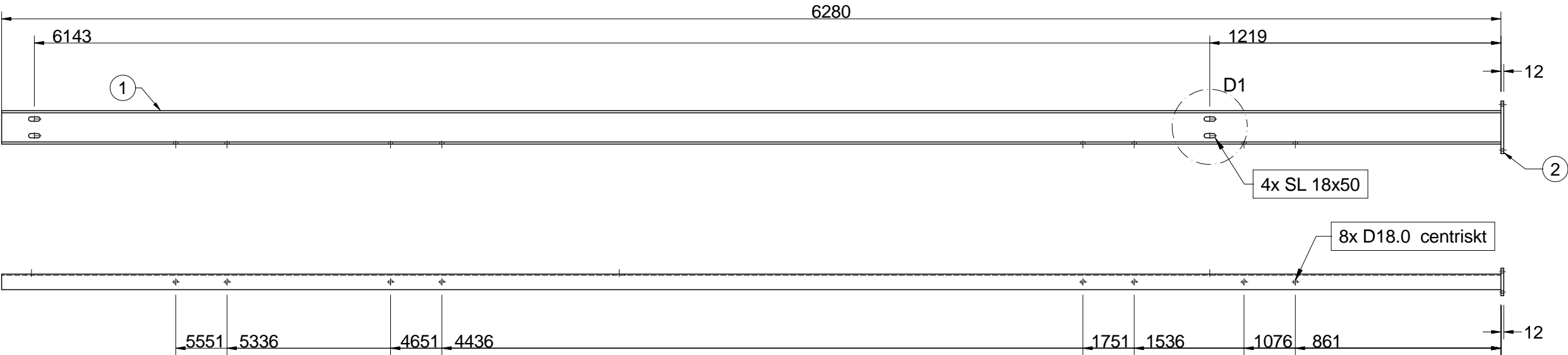
B			
A	NP	Release	2026-04-06
Rev	By	Comment	Date
Revisions			



SPEGELVÄND TILL ID20

3					
2	1	Plåt	S355J2	PL 220x115 t=12.0	
1	1	Balk	S355 N	UPE 140 L=6280	
Det nr	Qty/Unit	Item	Supplier/Materiel	Reference	Rev
<div>EAST SIDE TECHNOLOGY</div> <div>mail@eastside technology.com</div>					
Project: <div>DANSENS HUS - STUDIO SCENEN</div>					
Element: <div>BÄRVERK</div>			Description <div>ID 22</div>		
General notes					
Number of units needed			1		
Toleranser om ej annat anges					
			Welded constructions - ISO 13920- class A Machined constructions - ISO 2768-1mK		
Ytfinhet Ra om ej annat anges					
			Ra = 10		
Ytbehandling			Method	Colour	Glans
			BLACK RAL9005		
Material					
			S 355		
Additional information <div>Skarpa kanter brytes</div>				Weight <div>93 kg</div>	
Design by: <div>N. Philipson</div>		Date: <div>2026-04-06</div>		Scale: <div>1:20</div>	
Drawn by: <div>N. Philipson</div>		Format <div>A3</div>	Sheet <div>1</div>	Nr. <div>PF-126-132</div>	Rev. <div>A</div>

B			
A	NP	Release	2026-04-06
Rev	By	Comment	Date
Revisions			



SPEGELVÄND TILL ID21

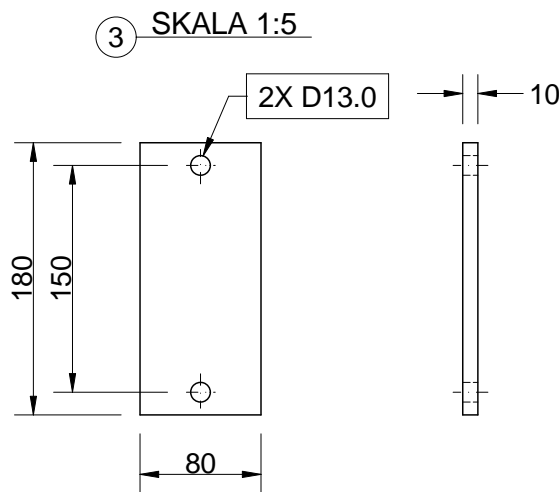
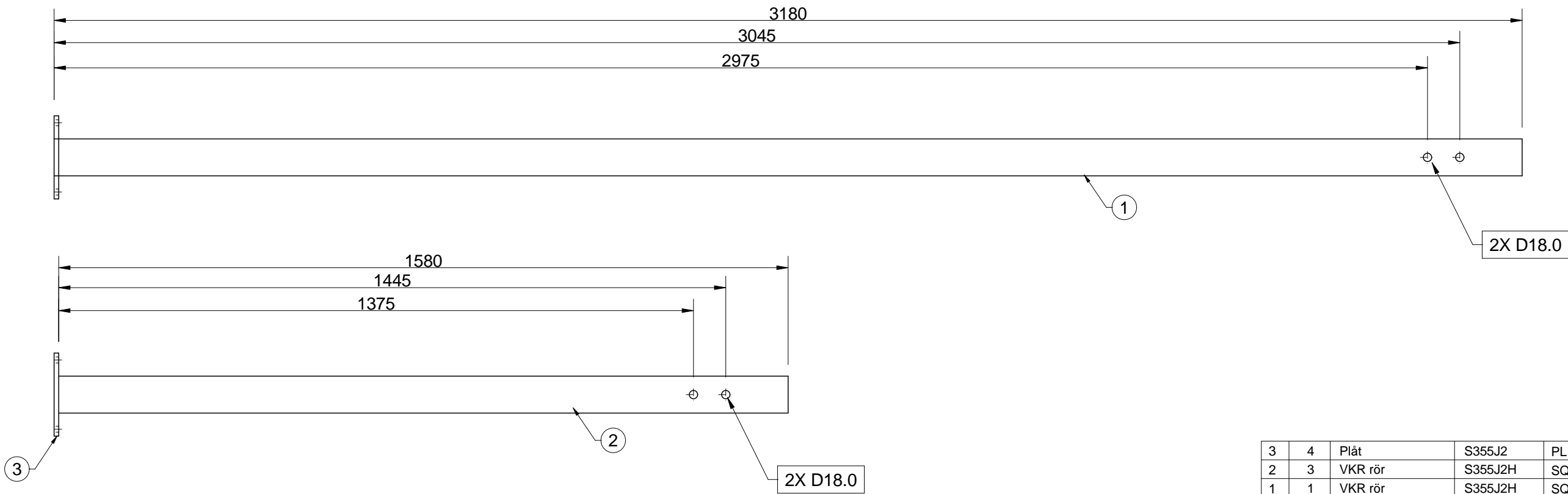
3					
2	1	Plåt	S355J2	PL 220x115 t=12.0	
1	1	Balk	S355 N	UPE 140 L=6280	
Det nr	Qty/Unit	Item	Supplier/Materiel	Reference	Rev

EAST SIDE TECHNOLOGY

mail@eastside technology.com

Project:						DANSENS HUS - STUDIOSCENEN					
Element:				Description							
BÄRVERK				ID 23							
General notes											
Number of units needed				1							
Toleranser om ej annat anges											
				Welded constructions - ISO 13920- class A Machined constructions - ISO 2768-1mK							
Ytfinhet Ra om ej annat anges											
				Ra = 10							
Ytbehandling				Method		Colour		Glans			
				BLACK RAL9005							
Material											
				S 355							
Additional information								Weight			
Skarpa kanter brytes								93 kg			
Design by:				Date:		Scale:					
N. Philipson				2026-04-06		1:20					
Drawn by:				Format		Sheet		Nr.		Rev.	
N. Philipson				A3		1		PF-126-133		A	

B			
A	NP	Release	2026-04-06
Rev	By	Comment	Date
Revisions			



3	4	Plåt	S355J2	PL 180x80 t=10.0	
2	3	VKR rör	S355J2H	SQ 80x80x3.0 L=1580	
1	1	VKR rör	S355J2H	SQ 80x80x3.0 L=3180	
Det nr	Qty/Unit	Item	Supplier/Materiel	Reference	Rev

EAST SIDE TECHNOLOGY

mail@eastsidetechnology.com

Project:
DANSENS HUS - STUDIOSCENEN

Element: Description
BÄRVERK STOLPAR

General notes

Number of units needed 1

Toleranser om ej annat anges
Welded constructions - ISO 13920- class A
Machined constructions - ISO 2768-1mK

Ytfinhet Ra om ej annat anges
Ra = 10

Ytbehandling Method Colour Glans

OBEHANDLADE

Material
S 355

Additional information
Skarpa kanter brytes Weight
61 kg

B			
A	NP	Release	2026-04-06
Rev	By	Comment	Date
Revisions			

Design by:	Date:	Scale:		
N. Philipson	2026-04-06	1:10		
Drawn by:	Format	Sheet	Nr.	Rev.
N. Philipson	A3	1	PF-126-134	A